



The Sacramento River Group

— BUREAU OF — Thursday, April 23, 2026
RECLAMATION

Virtual (Online) Meeting Only

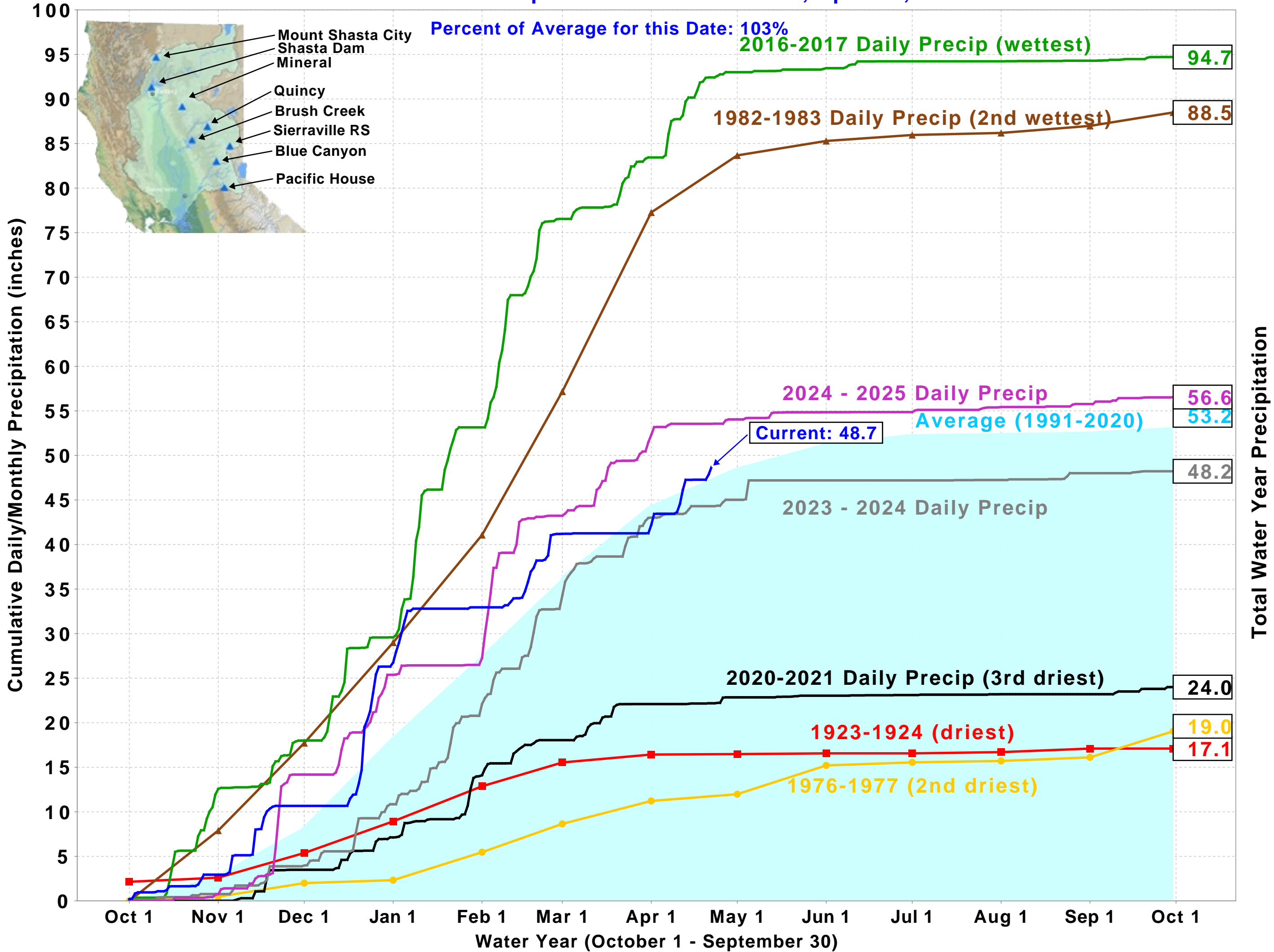
Teams Meeting: [JOIN HERE](#); +1 321-209-6143, 145576470#

Agenda

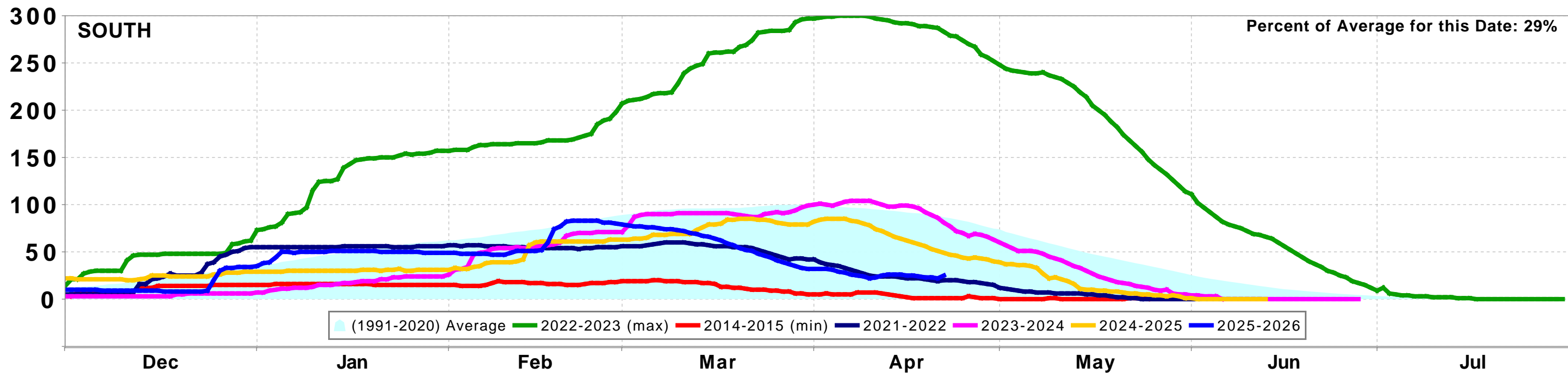
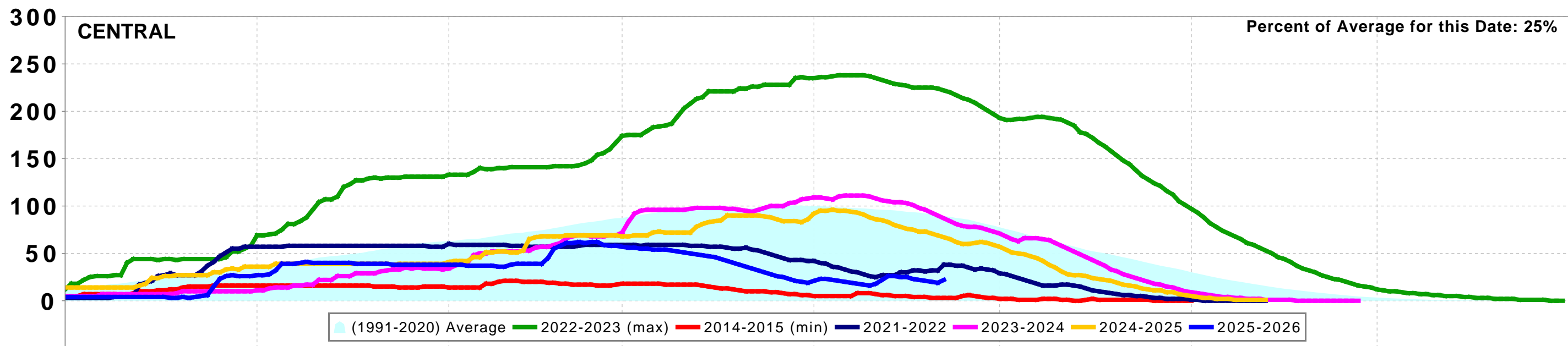
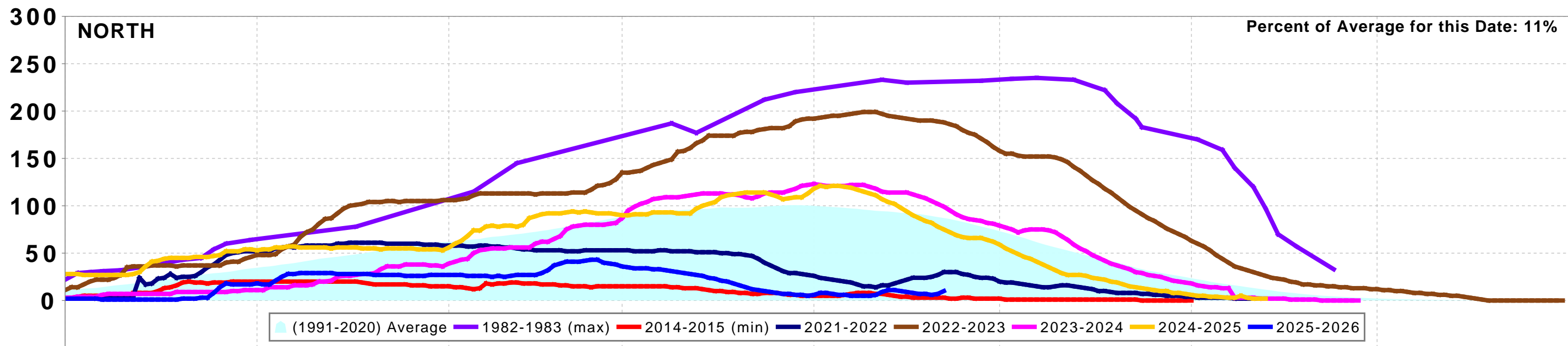
<i>Time</i>	<i>Topic</i>
1:00 pm	Welcome, Introductions, Agenda Review – Mia Schiappi, Kearns & West
1:05 pm	Hydrology and Operations Update –Tom Patton, Reclamation <i>Objective: report on the latest data and information regarding current hydrologic conditions, including temperatures and flows, and implications for the Sacramento River System</i>
1:30 pm	Draft Temperature Management Plan , Elissa Buttermore, USBR <i>Objective: introduce the timeline for distribution and expectations for review by participants of the Draft Temperature Management Plan.</i>
1:35 pm	Flow Planning Updates , Elissa Buttermore & Tom Patton <i>Objective: Provide updates on pulse flow planning with the SRG based on discussions occurring in the SRG Flow Planning Meetings.</i>
1:45 pm	CDFW Sacramento River Fish Monitoring Update <i>Objective: share the latest state agency information about fish movement and conditions that might affect temperature management</i> <ul style="list-style-type: none">1) Carcass Surveys2) Redd Counts3) Stranding and Dewatering surveys
1:55 pm	USFWS Fish Conditions, Forecasts and Hatchery Updates <i>Objective: share the latest federal agency information regarding hatchery activities, fish movement and related conditions that might affect temperature management</i> <ul style="list-style-type: none">1) Fall Run Chinook Salmon Update – Brett Galyean, Coleman National Fish Hatchery2) Winter Run Chinook Update – Kaitlin Dunham, Livingston Stone Hatchery

	3) Estimated percentage of the population upstream of Red Bluff Diversion Dam for steelhead, winter-run, and spring-run Chinook salmon and RST updates – Bill Poytress, USFWS
2:05 pm	WTMP Model —Mechele Pacheco, Reclamation <i>Objective: provide information about the tools, development and plans for facilitated adoption of the new model</i>
2:55 pm	Additional Announcements & Review Action Items – Mia Schiappi, Kearns & West
3:00 pm	Adjourn

Northern Sierra Precipitation: 8-Station Index, April 22, 2026



California Snow Water Content, April 22, 2026, Percent of April 1 Average

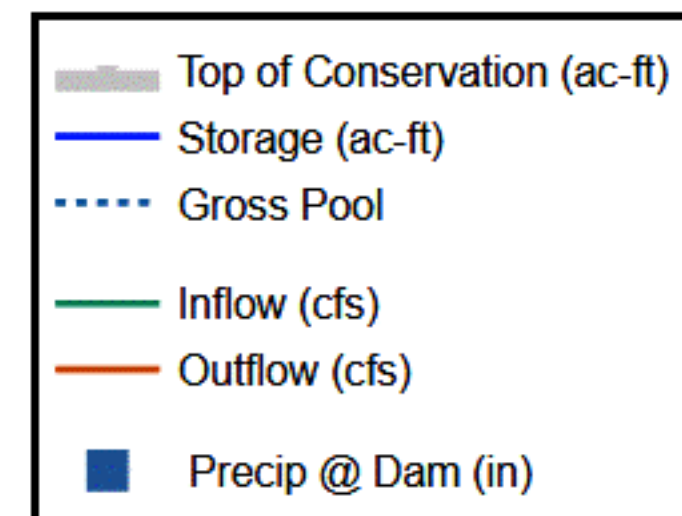
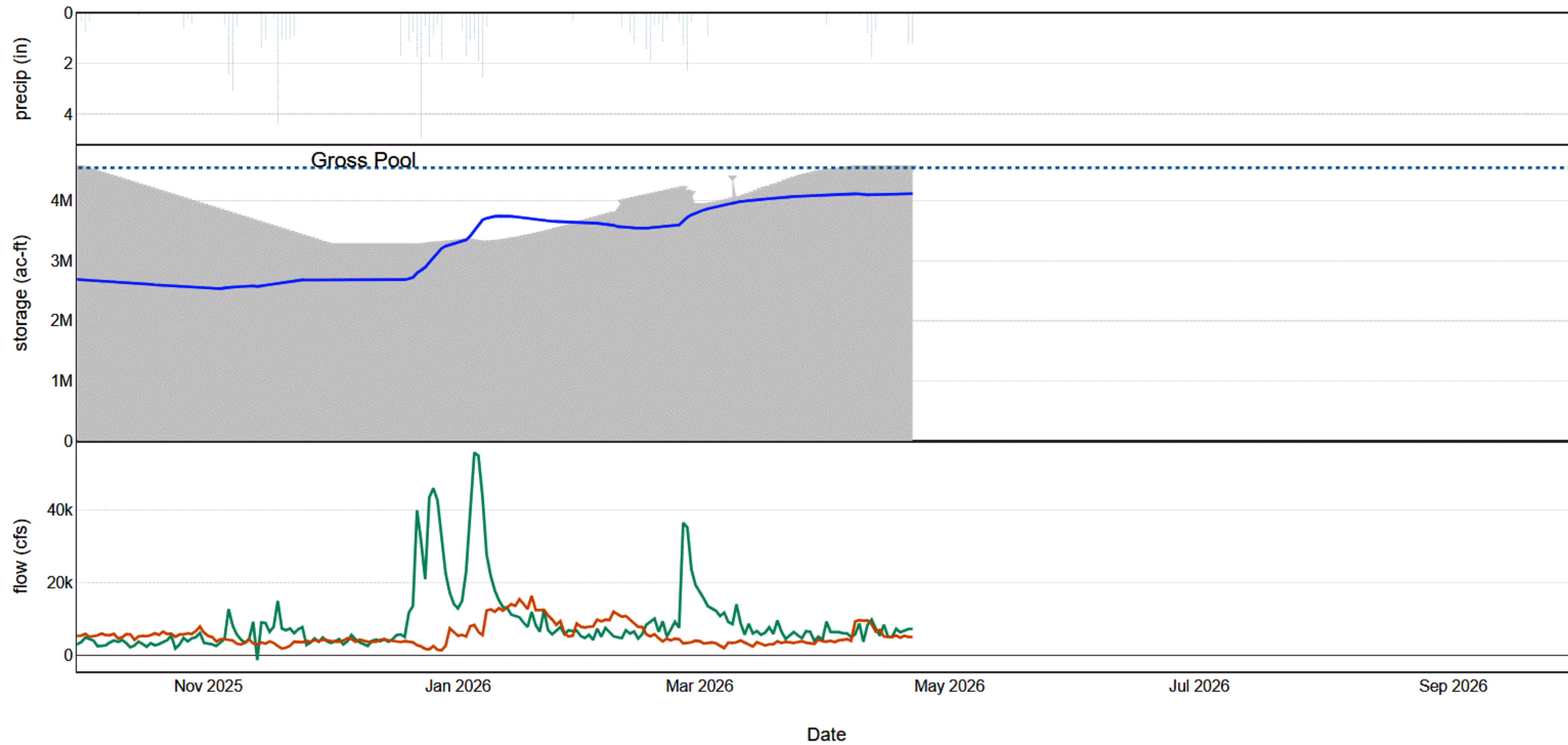


Statewide Percent of April 1: 19.0%

Statewide Percent of Average for Date: 22.0%

Shasta Dam & Lake - Sacramento River Basin

WY 2026 | Generated: 2026-04-22T12:07:01-0700





April 21, 2026

Reservoir Releases in Cubic Feet/Second

Reservoir	Dam	WY 2025	WY 2026	15 Yr Median
Trinity	Lewiston	4,803	737	585
Sacramento	Keswick	7,721	5,993	5,993
Feather	Oroville(SWP)	5,400	5,000	1,550
American	Nimbus	5,285	7,181	3,136
Stanislaus	Goodwin	511	753	1,507
San Joaquin	Friant	536	882	509

Storage in Major Reservoirs in Thousands of Acre-Feet

Reservoir	Capacity	15 Yr Avg	WY 2025	WY 2026	% of 15 Yr Avg
Trinity	2,448	1,748	2,185	2,248	129
Shasta	4,552	3,678	4,373	4,118	112
Folsom	977	725	910	907	125
New Melones	2,420	1,550	2,000	1,863	120
Fed. San Luis	966	699	842	780	112
Total North CVP	11,363	8,399	10,310	9,916	118
Millerton	521	309	405	445	144
Oroville (SWP)	3,425	2,690	3,174	3,278	122

Accumulated Inflow for Water Year to Date in Thousands of Acre-Feet

Reservoir	Current WY 2026	WY 1977	WY 1983	15 Yr Avg	% of 15 Yr Avg
Trinity	925	103	1,390	726	127
Shasta	3,710	1,537	7,780	3,506	106
Folsom	1,725	218	3,949	1,649	105
New Melones	505	---	1,247	538	94
Millerton	804	116	1,836	624	129

Accumulated Precipitation for Water Year To Date in Inches

Reservoir	Current WY 2026	WY 1977	WY 1983	Average (N Years)	% of Average	Last 24 Hours
Trinity at Fish Hatchery	28.75	9.27	50.99	27.67 (66)	104	0.67
Sacramento at Shasta Dam	64.26	11.04	104.29	54.42 (71)	118	1.21
American at Blue Canyon	55.45	15.64	96.22	58.45 (52)	95	1.57
Stanislaus at New Melones	25.76	---	42.10	24.79 (49)	104	0.47
San Joaquin at Huntington Lk	29.38	11.50	75.30	36.23 (53)	81	0.40

DATE	Mean Daily Water Temperatures (°F)													Mean Daily Release (CFS)			Mean Daily Air Temperatures (°F)		
	TCD ¹	SHD	SPP ¹	KWK	SAC	CCR ²	BSF	BND	RDB	IGO	LWS	DGC	NFH	Shasta Generation	Spring Creek P.P.	Keswick Total	RDD	BSF	RDB
Mar	52.1	51.4	50.7	51.9	52.5	53.2	55.0	55.8	57.0	50.8	49.1	50.7	51.5	3212	1021	4274	63.6	60.8	63.8
04/01	53.0	51.8	52.1	53.4	53.6	53.9	55.3	55.9	56.8	51.2	48.7	50.5	51.3	3705	503	4169	56.5	57.3	57.8
04/02	53.0	52.2	51.6	53.5	54.1	54.5	55.1	55.3	56.3	50.9	48.4	49.9	50.9	3955	476	4036	51.5	53.4	55.2
04/03	53.9	52.9		53.5	54.0	54.6	55.7	56.2	56.9	51.1	48.6	50.3	51.5	3595	13	4036	63.0	57.5	59.2
04/04	54.2	53.6		53.4	54.0	54.9	56.4	56.9	? 57.9	51.6	48.8	51.4	52.5	4109	8	4025	60.5	58.5	62.3
04/05	54.3	53.4		54.2	54.6	55.4	57.0	58.0	59.1	51.9	49.3	52.5	53.8	4205	8	4087	63.5	60.5	63.0
04/06	54.4	53.8	51.8	54.7	55.2	56.4	57.9	58.8	60.0	52.2	49.7	53.6	55.0	4424	528	5012	66.0	62.3	65.4
04/07	54.9	? 54.2	51.7	54.6	55.1	56.3	58.0	59.3	60.6	52.3	50.0	53.8	55.5	3925	401	4901	63.0	60.3	62.1
04/08	56.0	55.3	51.9	54.8	55.0	55.5	57.3	58.7	60.1	52.1	50.4	52.1	53.8	9240	565	9881	65.5	62.4	64.2
04/09	56.1	55.5	51.9	55.5	55.5	56.2	57.1	57.9	59.2	52.3	50.2	52.6	53.8	9631	610	9977	66.0	63.2	64.4
04/10	55.9	55.3	51.9	55.6	55.5	56.0	56.7	57.4	? 58.5	51.7	49.6	51.7	52.9	9462	480	9978	58.5	56.0	57.7
04/11	54.3	53.5		55.4	55.4	55.7	56.4	56.8	57.5	51.3	49.1	50.6	51.3	9600	11	10028	54.0	55.1	55.3
04/12	54.6	53.7	50.5	53.8	54.2	54.3	54.9	55.2	56.0	50.6	48.8	49.1	49.7	8539	87	8644	48.0	48.8	50.0
04/13	55.0	54.1		53.7	54.0	54.4	54.8	54.6	55.4	51.8	48.7	50.3	50.5	6498	8	7477	54.5	53.1	53.8
04/14	55.4	54.5	51.0	54.7	54.9	55.5	56.1	56.4	57.1	51.9	48.5	50.9	51.8	6952	7692	6474	55.5	54.3	55.5
04/15	54.3	53.3	52.1	55.3	55.2	55.9	56.7	57.3	58.3	51.9	48.8	50.2	51.3	5137	345	5959	59.5	57.2	57.6
04/16	55.3	53.9	51.9	54.8	55.2	55.7	56.4	56.6	57.4	51.4	49.3	50.0	50.1	4532	337	5981	56.0	53.6	54.3
04/17	55.1	54.2	52.5	54.3	54.7	55.3	56.1	56.5	57.5	51.6	49.3	50.3	50.7	4954	569	6083	59.0	54.9	57.1
04/18	54.8	53.3	52.4	54.8	55.1	55.8	56.7	57.2	58.1	52.1	48.8	50.9	52.0	5395	547	6059	59.0	57.3	58.9
04/19	54.6	53.6	52.5	55.0	55.4	56.3	57.5	58.4	59.5	52.6	48.7	51.3	53.2	4818	555	6039	64.0	61.3	63.0
04/20	54.5	53.7	52.8	54.9	54.9	55.1	56.1	57.2	58.4	51.3	48.7	49.6	50.7	5323	555	5982	55.0	54.9	55.8
04/21	54.8	53.8	52.7	54.3	54.6	55.0	55.8	55.9	56.6	51.6	48.6	49.7	50.4	5016	555	5993	56.0	52.8	52.9
04/22																			
04/23																			
04/24																			
04/25																			
04/26																			
04/27																			
04/28																			
04/29																			
04/30																			
-																			
Apr	54.7	53.8	52.0	54.5	54.8	55.4	56.4	57.0	58.0	51.7	49.1	51.0	52.0	5858	707	6420	58.8	56.9	58.4

Total CFS	123015	14853	134821
Total AF	243995	29460	267412

Legend

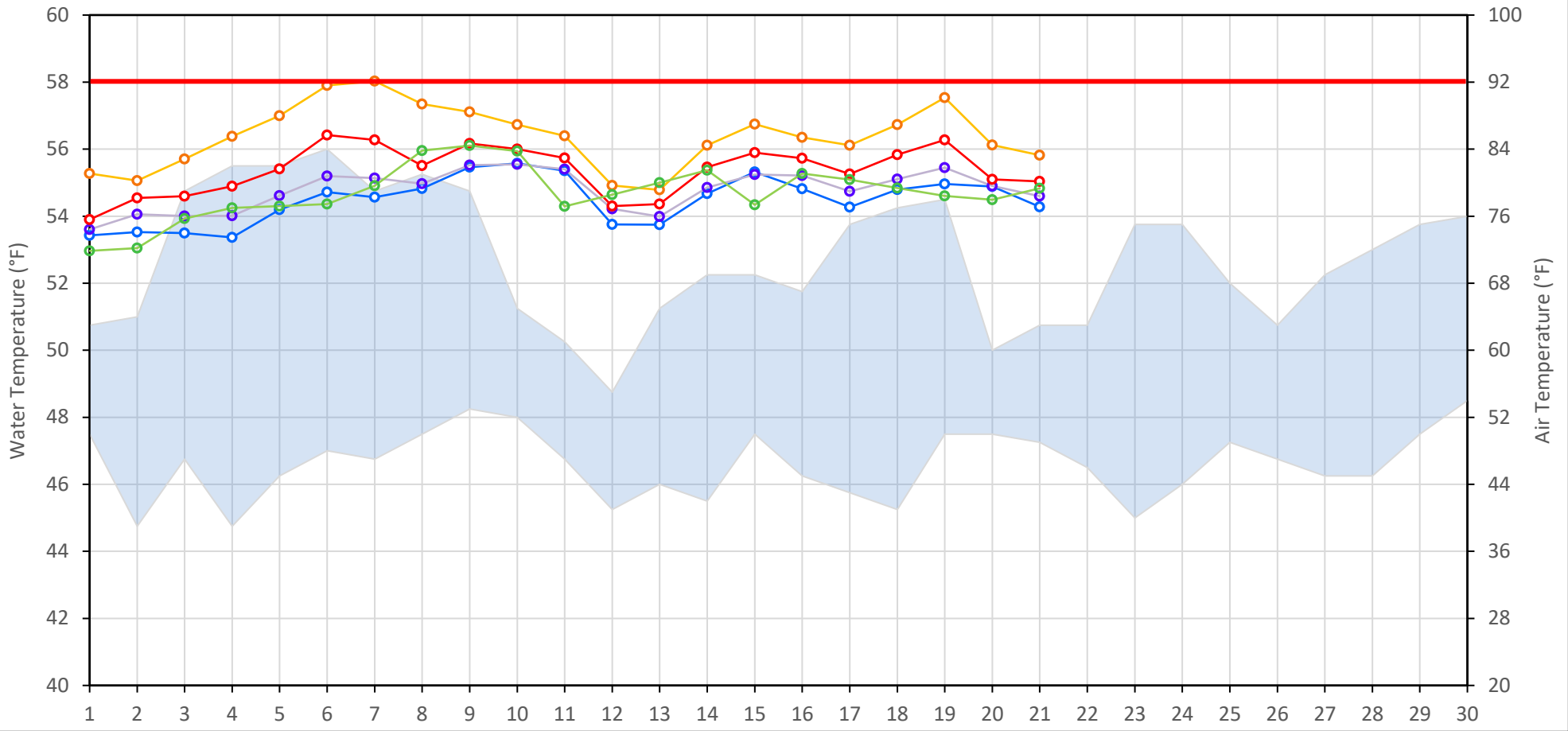
Notes

- ? = 1-9 hours of data missing (Average includes estimations)
- ! = 10 or more hours of data missing (Average not calculated)
- # = Station out of service
- ↑ = Record high air temperature
- ↓ = Record low air temperature
- = Monthly Averages

- ¹ Temperatures are weighted averages based on individual penstock flow and temperature
- Highlighted cells in the TCD column indicate a TCD change was made on that day
- ² Current Clear Creek River control point (see page 3 for more details)

Sacramento River Mean Daily Temperatures

Redding Air (Observed and Forecasted) KWK SAC CCR BSF TCD



Station Details			
Code	Body of Water	Location ¹	CDEC Link
TCD	N/A	Shasta Power Plant	N/A
SHD	Sacramento River	0.3 miles downstream of Shasta Power Plant	Click Here
SPP	N/A	Spring Creek Power Plant	N/A
KWK	Sacramento River	0.8 miles downstream of Keswick Dam	Click Here
SAC	Sacramento River	4.8 miles downstream of Keswick Dam	Click Here
CCR	Sacramento River	9.7 miles downstream of Keswick Dam	Click Here
BSF	Sacramento River	25 miles downstream of Keswick Dam	Click Here
JLF	Sacramento River	34 miles downstream of Keswick Dam	Click Here
BND	Sacramento River	41 miles downstream of Keswick Dam	Click Here
RDB	Sacramento River	58 miles downstream of Keswick Dam	Click Here
IGO	Clear Creek	7.3 miles downstream of Whiskeytown Dam	Click Here

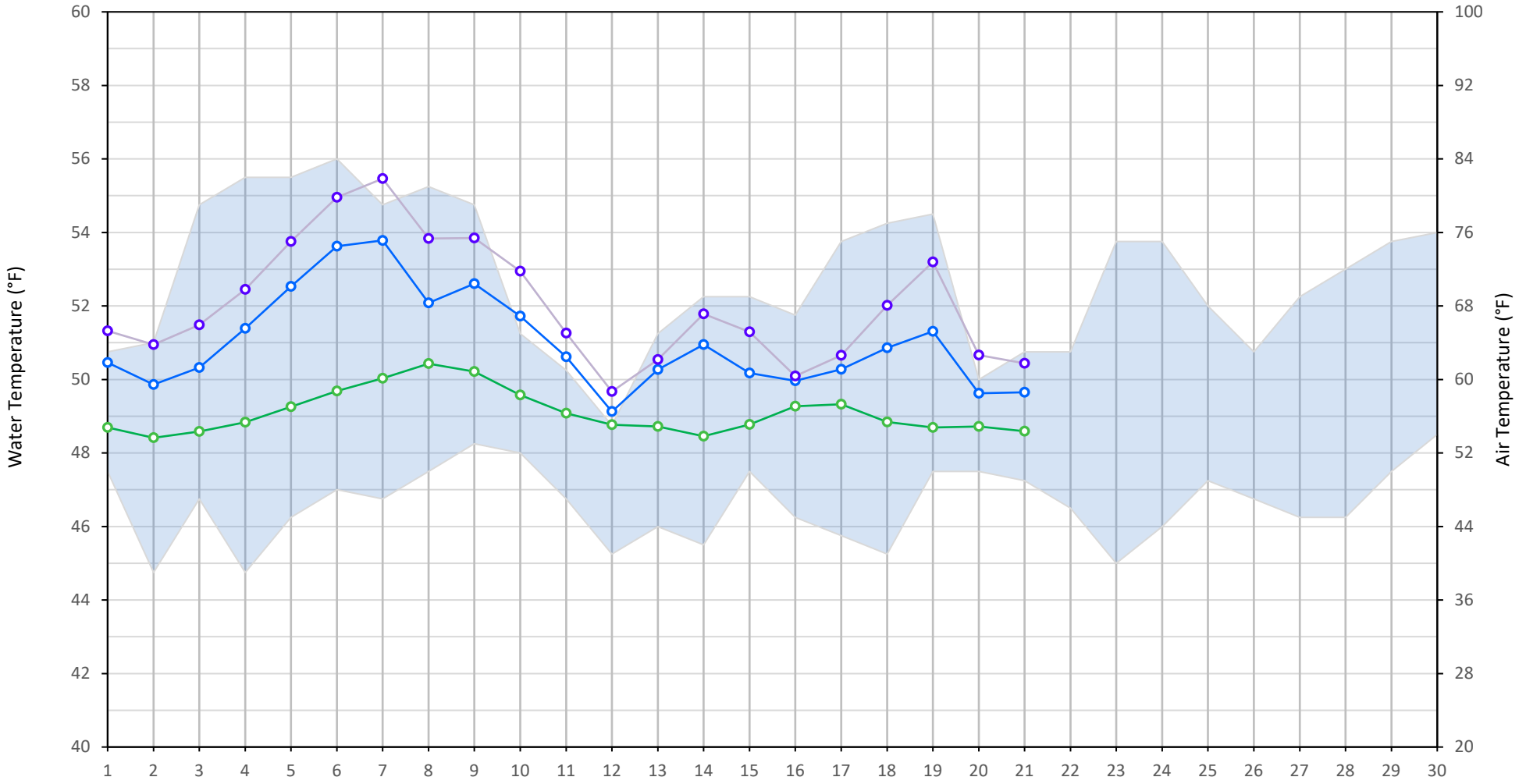
Water Right Temperature Control Points				
River	Point	Temp. (°F)	Begin Date	End Date
Sacramento	CCR	58.0	Mar-01	
Sacramento	CCR	53.5		

Notes

¹ Distances are approximate

Trinity River Mean Daily Temperatures

Redding Air (Observed and Forecasted) LWS DGC NFH



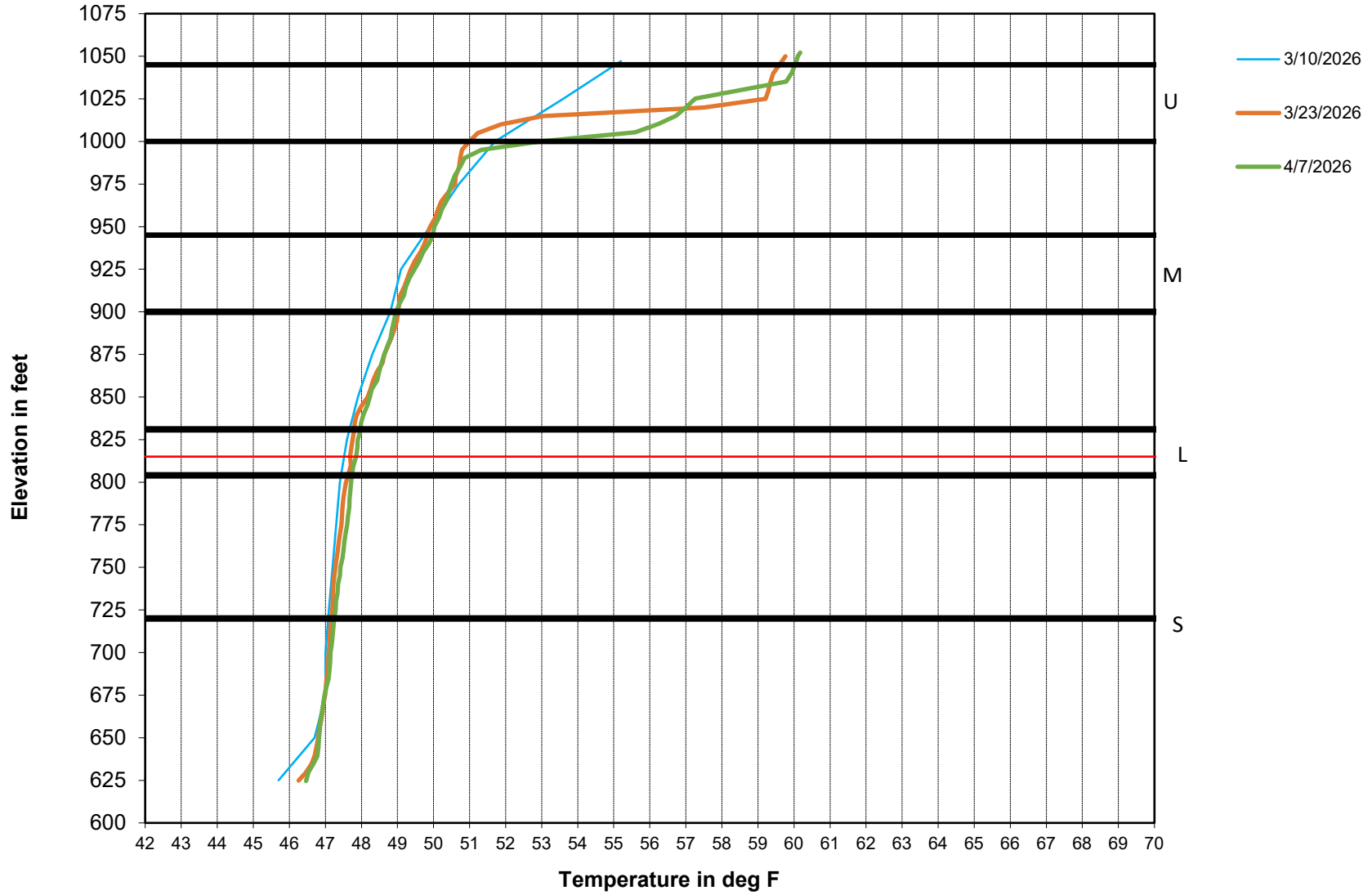
Station Details			
Code	Body of Water	Location ¹	CDEC Link
LWS	Trinity River	1.1 miles downstream of Lewiston Dam	Click Here
DGC	Trinity River	19 miles downstream of Lewiston Dam	Click Here
NFH	Trinity River	38 miles downstream of Lewiston Dam	Click Here

Water Right Temperature Control Points				
River	Point	Temp. (°F)	Begin Date	End Date
Trinity	DGC	56	Sep-15	Oct-01
Trinity	NFH	56	Oct-01	Dec-31

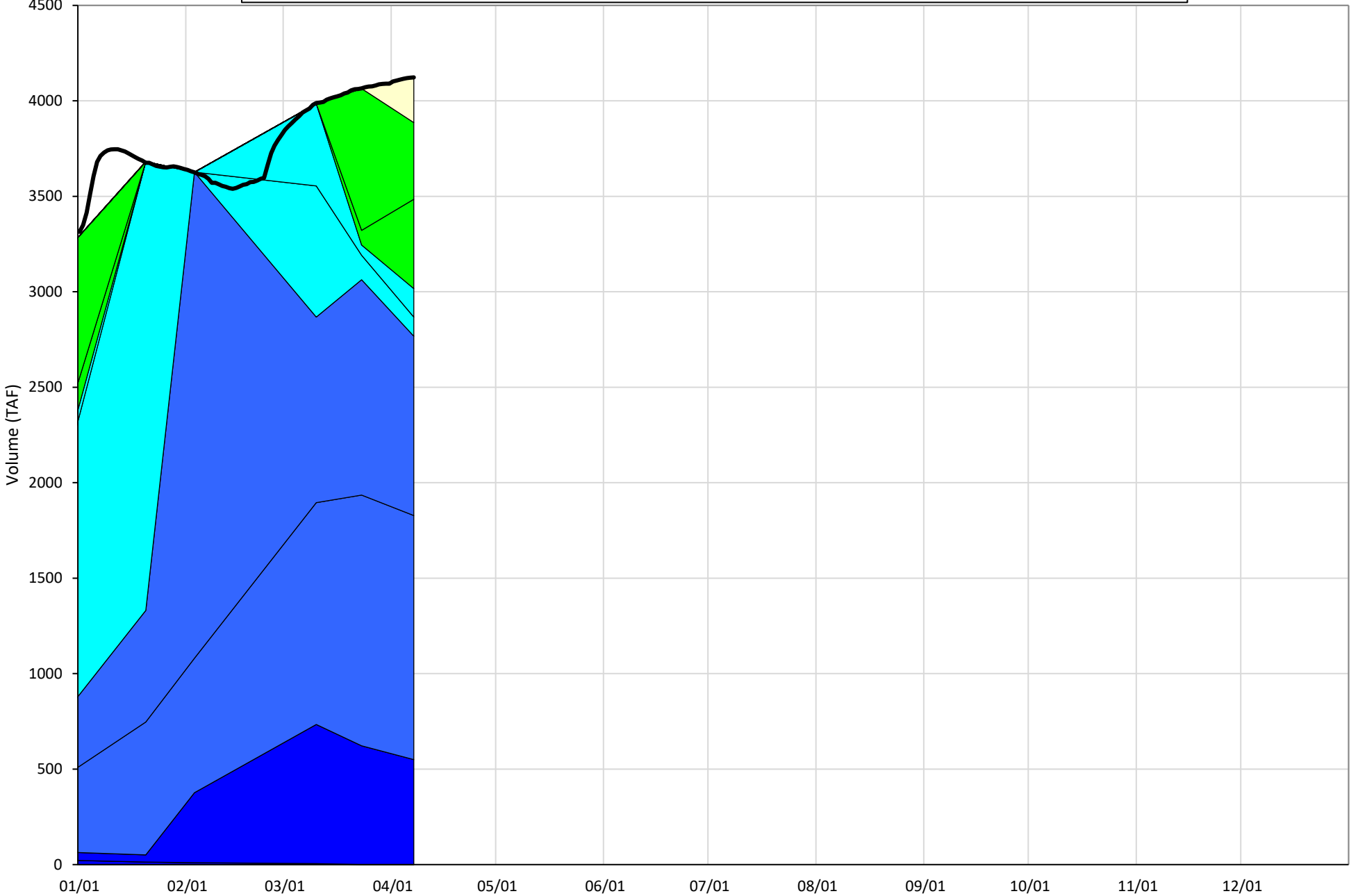
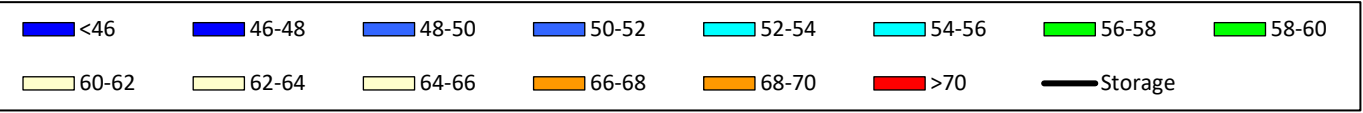
Notes

¹ Distances are approximate

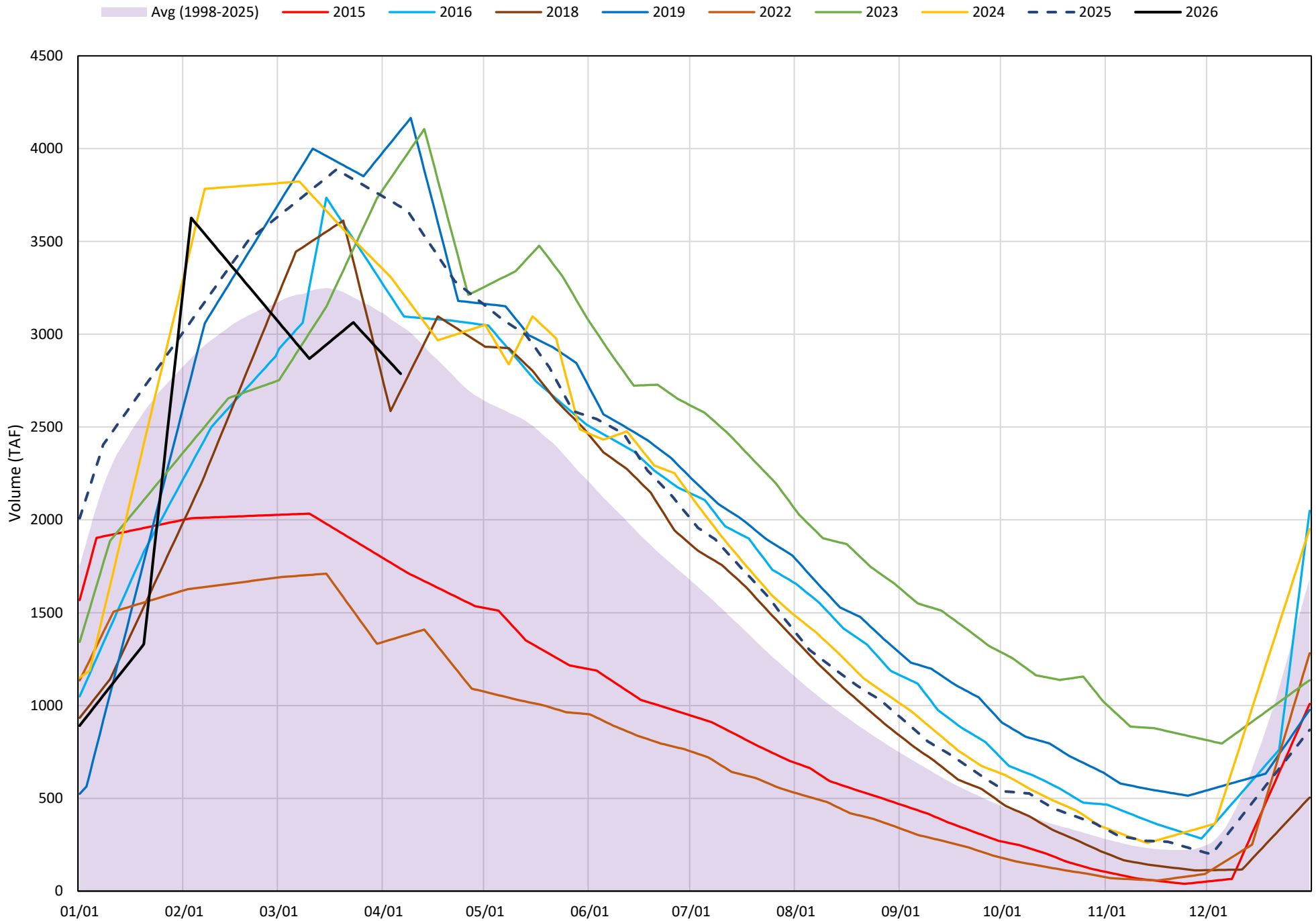
2026 Shasta Temperature Profiles



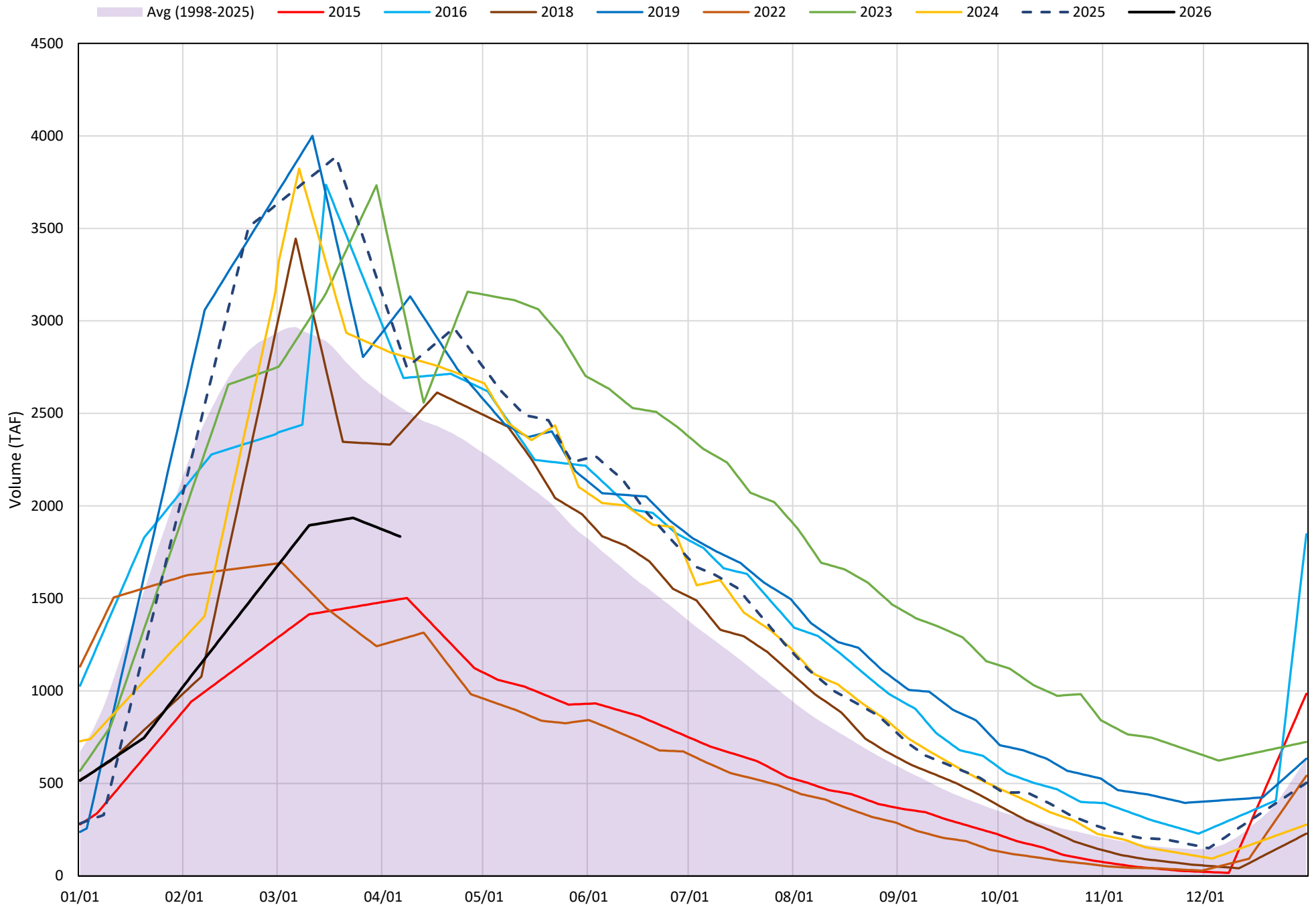
Shasta Lake Isothermobaths Plot - 2026



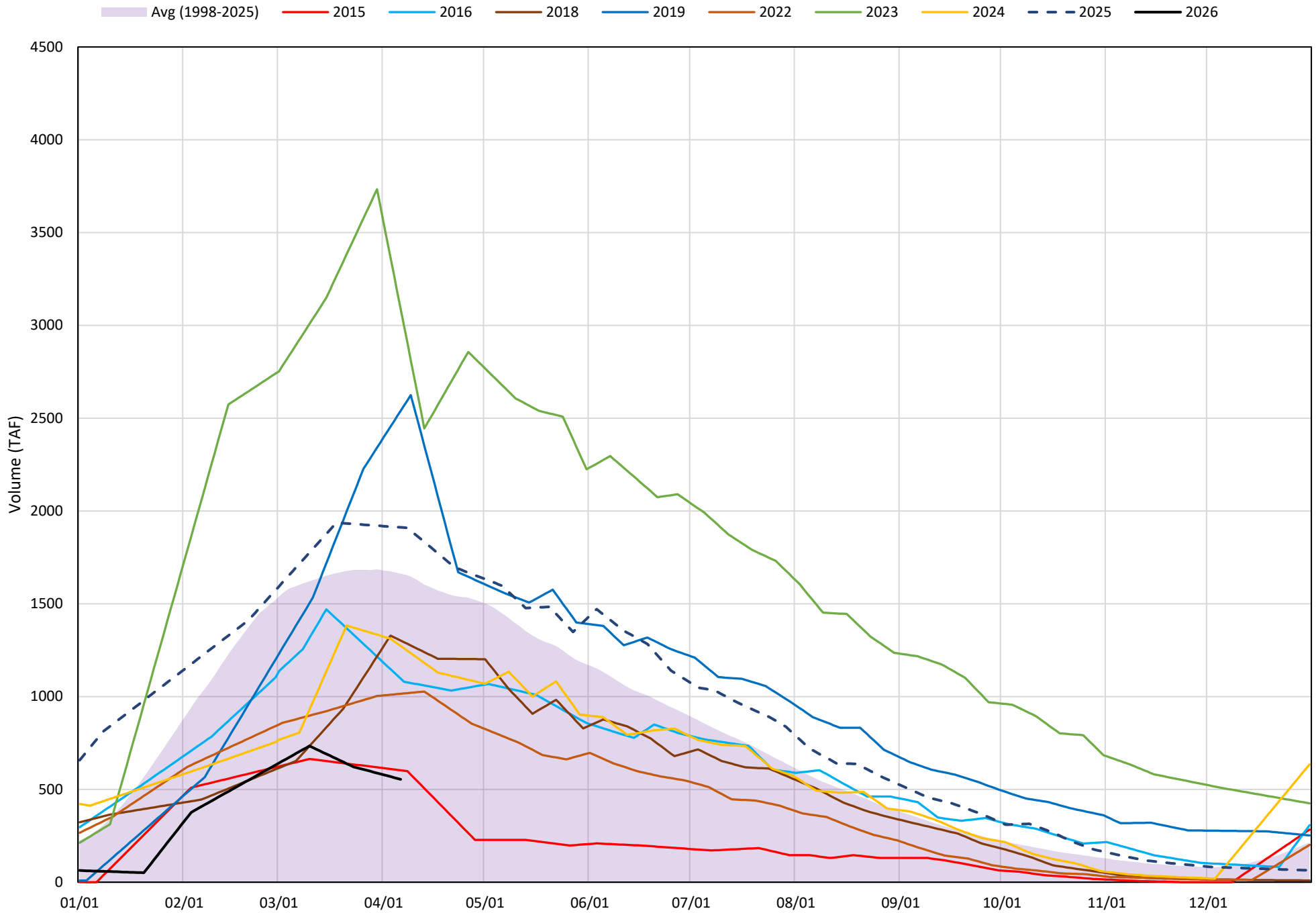
Shasta Lake Cold Water Pool Volume $\leq 52^{\circ}\text{F}$



Shasta Lake Cold Water Pool Volume $\leq 50^{\circ}\text{F}$

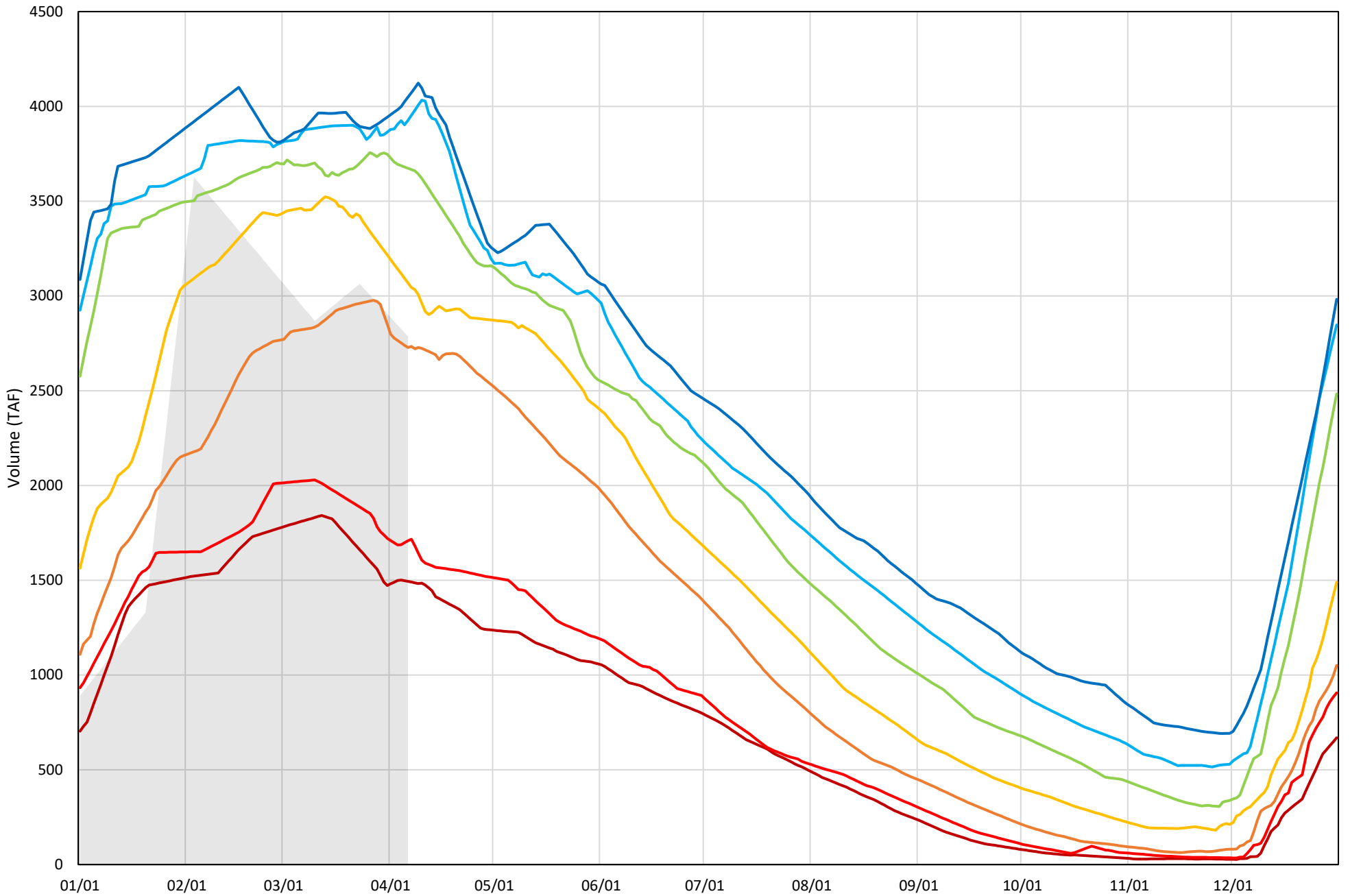


Shasta Lake Cold Water Pool Volume $\leq 48^{\circ}\text{F}$



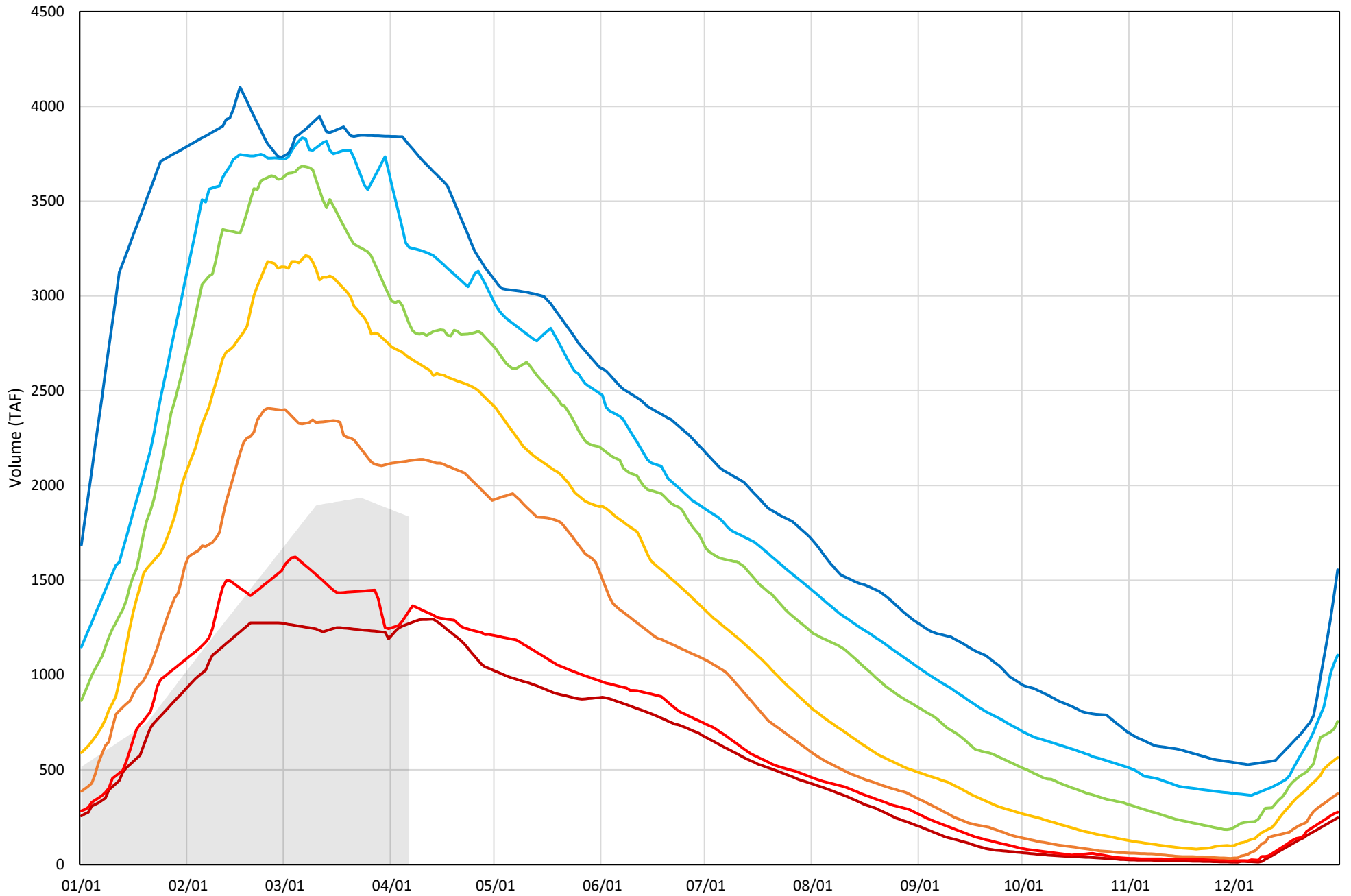
Shasta Lake Cold Water Pool Volume ≤52°F - Percent Exceedances (1998-2025)

2026 95 90 75 50 25 10 5



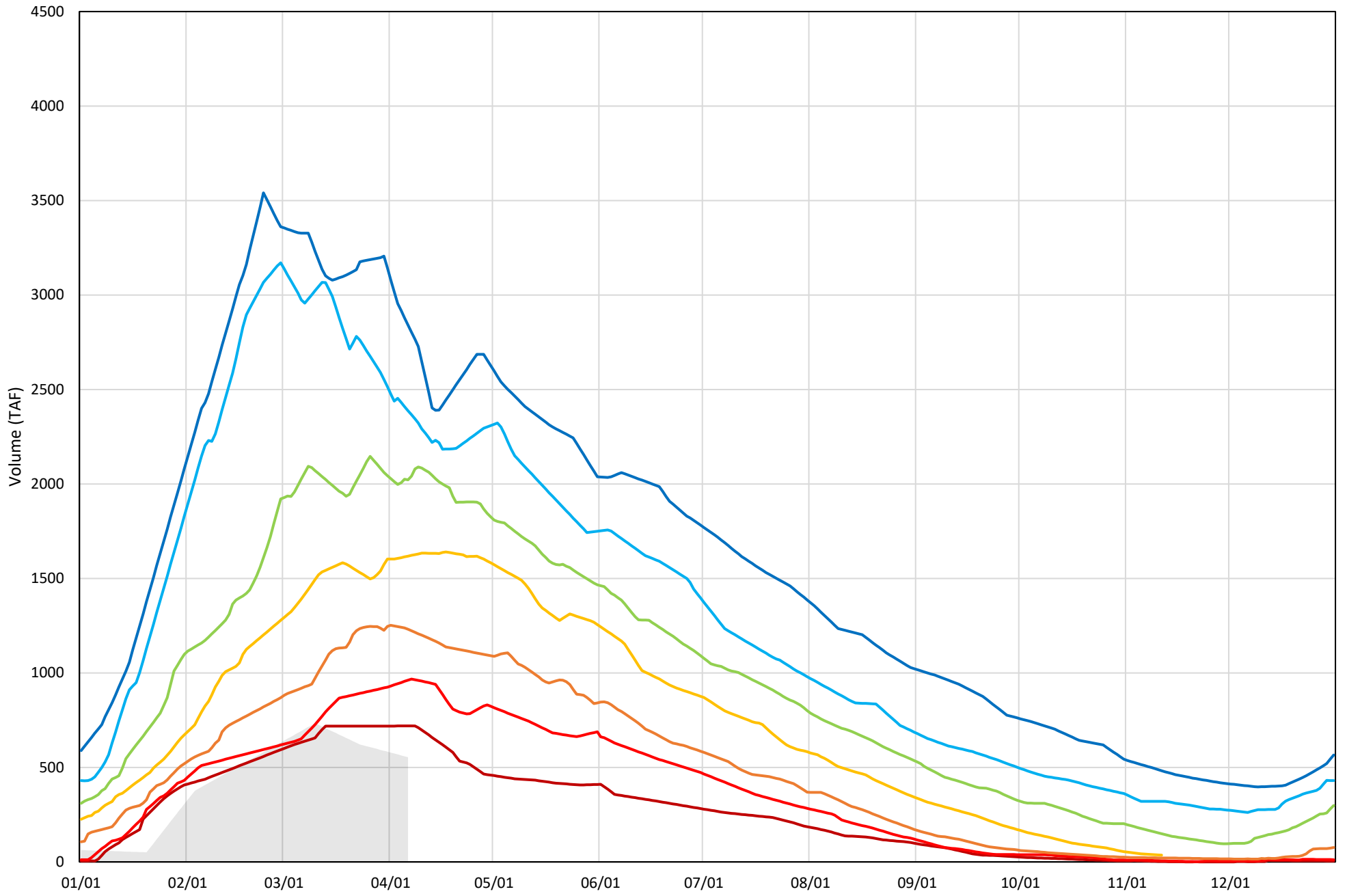
Shasta Lake Cold Water Pool Volume $\leq 50^{\circ}\text{F}$ - Percent Exceedances (1998-2025)

2026 95 90 75 50 25 10 5

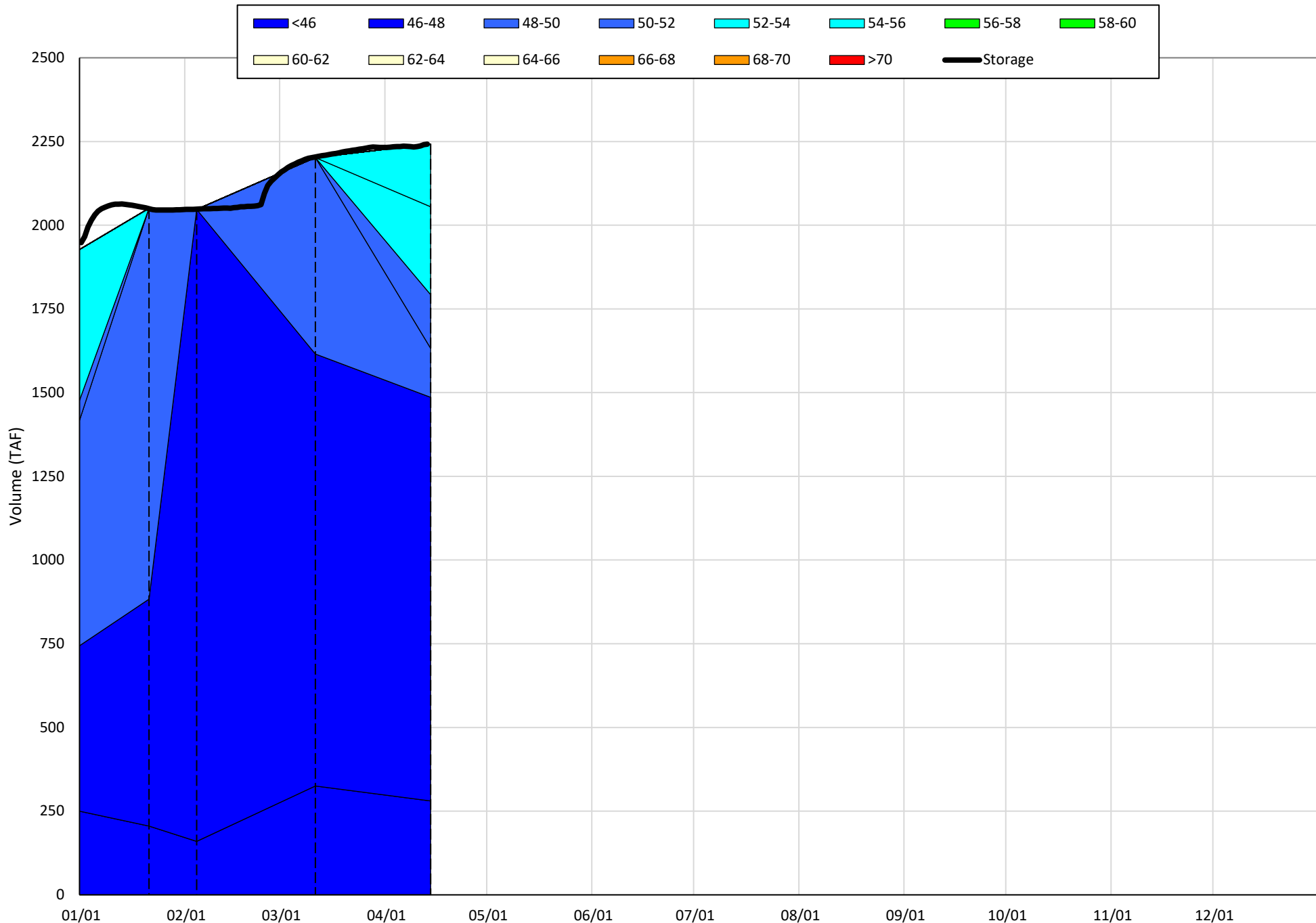


Shasta Lake Cold Water Pool Volume $\leq 48^{\circ}\text{F}$ - Percent Exceedances (1998-2025)

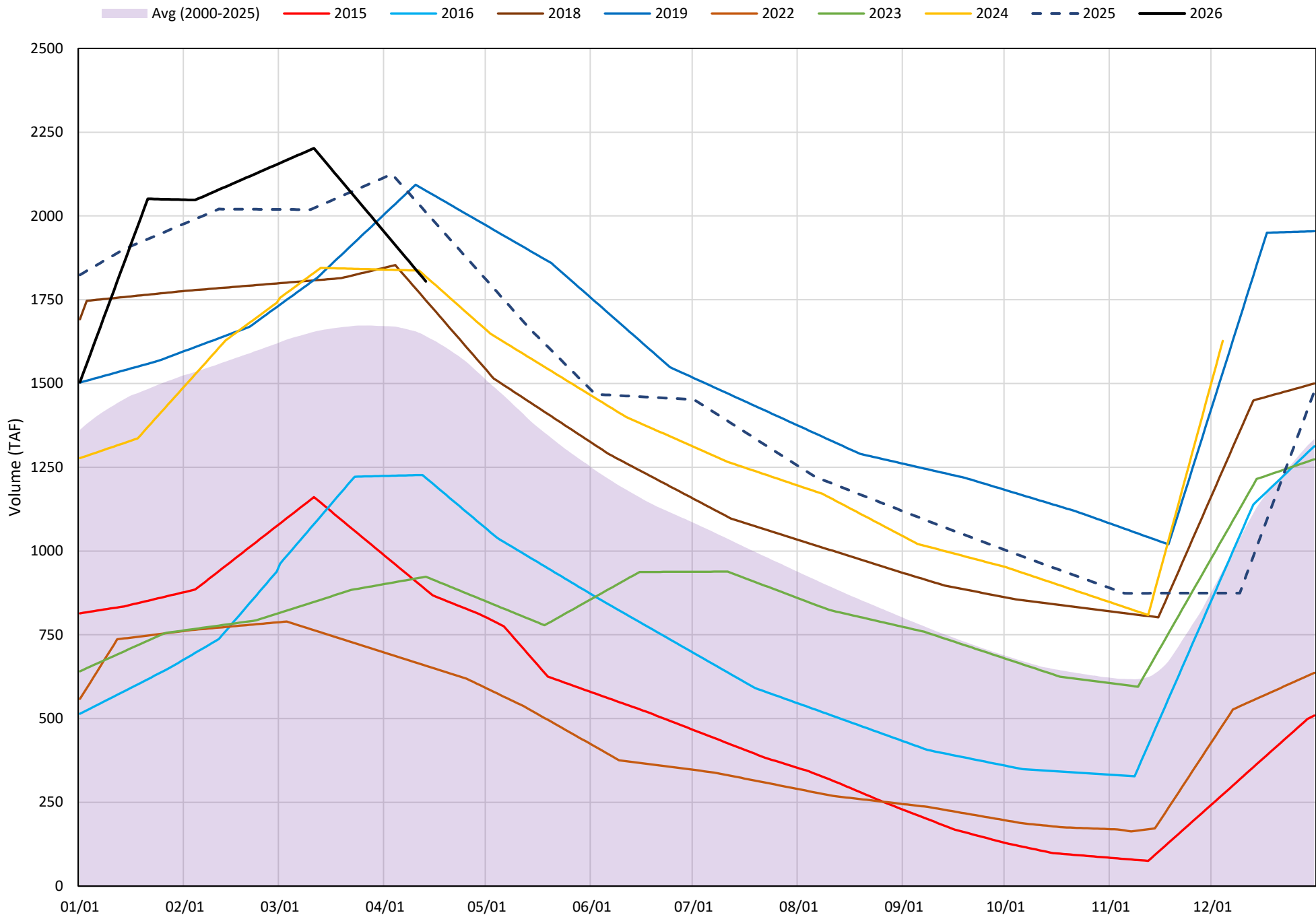
2026 95 90 75 50 25 10 5



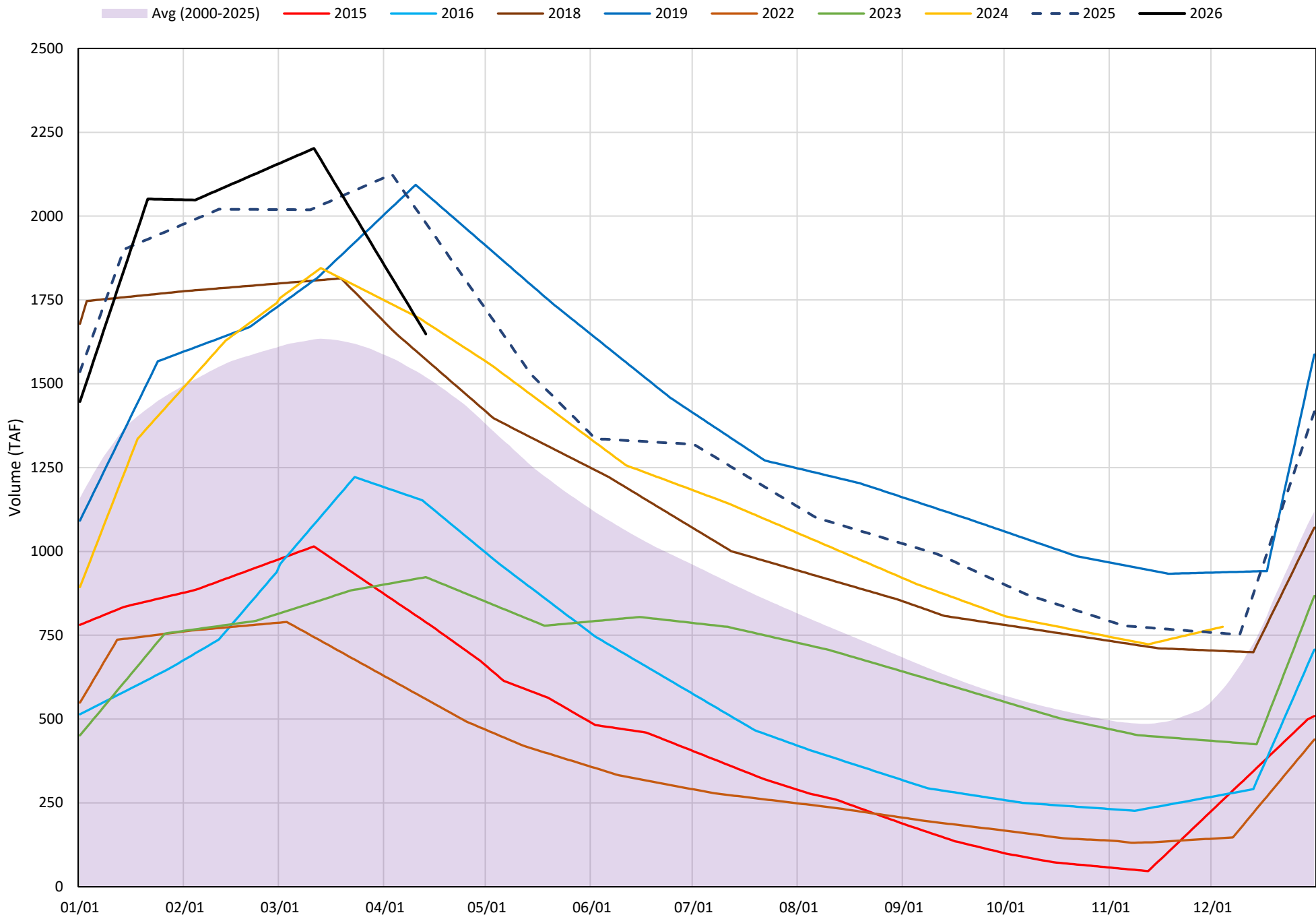
Trinity Lake Isothermobaths Plot - 2026



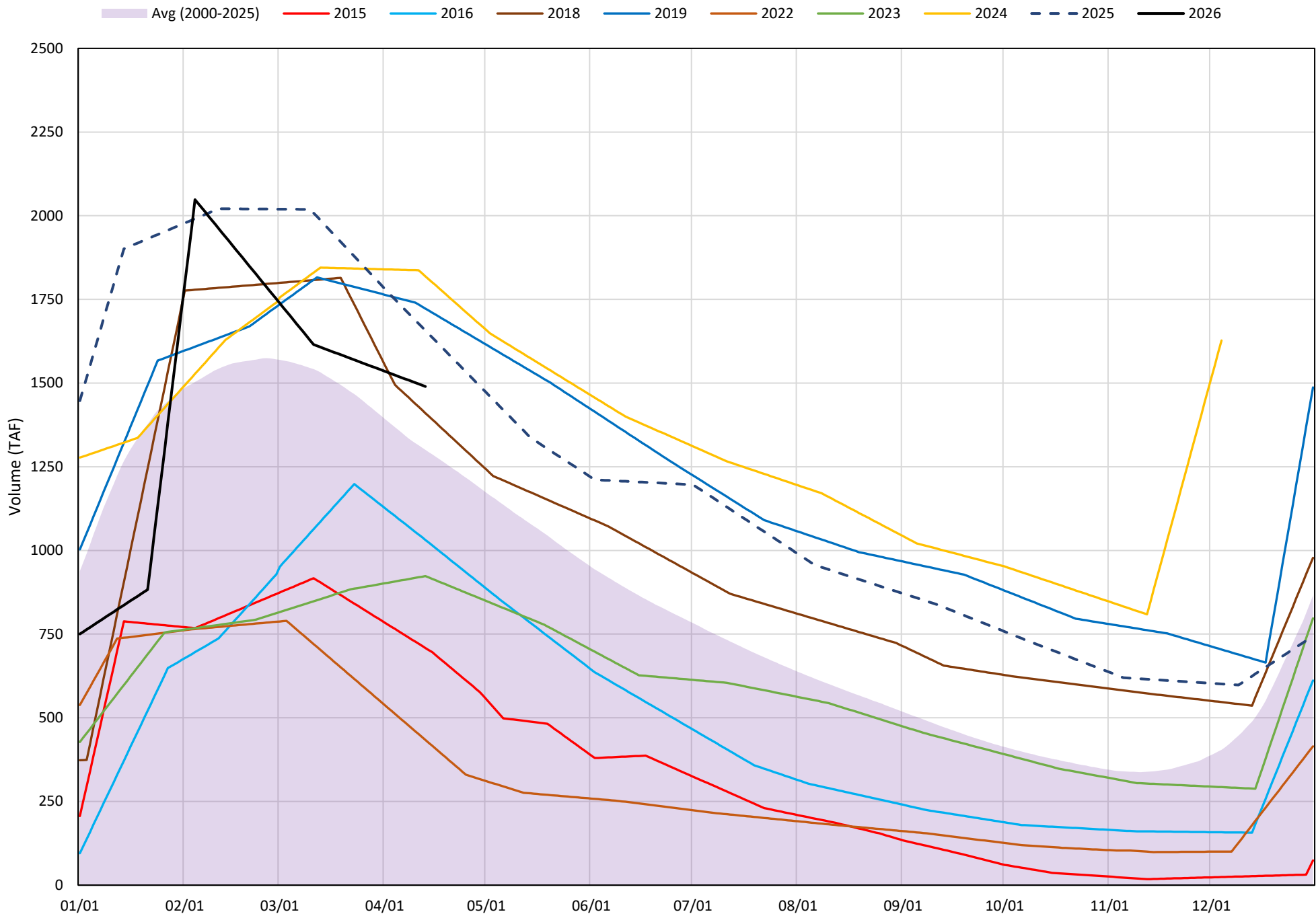
Trinity Lake Cold Water Pool Volume ≤52°F



Trinity Lake Cold Water Pool Volume ≤50°F

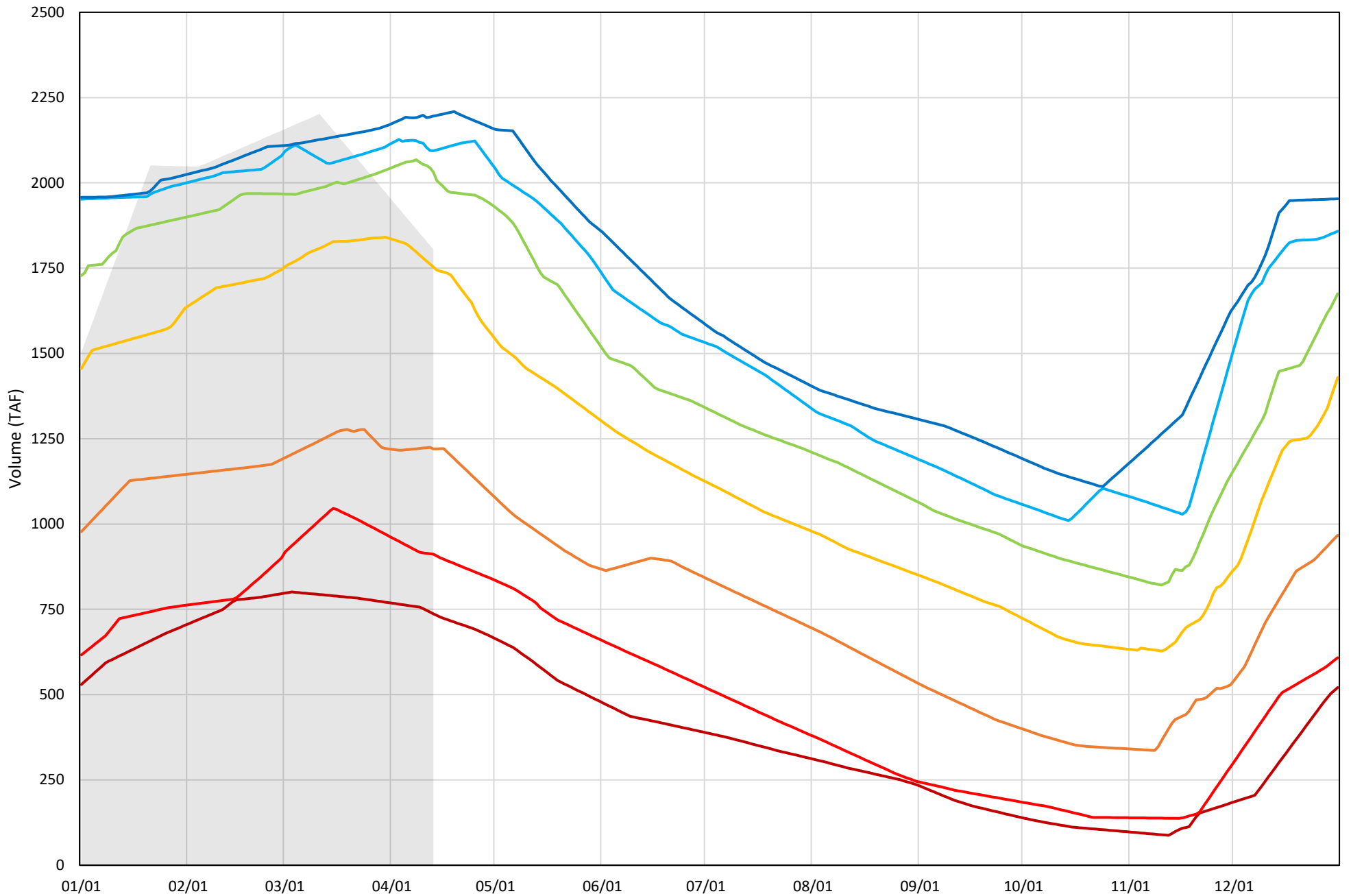


Trinity Lake Cold Water Pool Volume ≤48°F



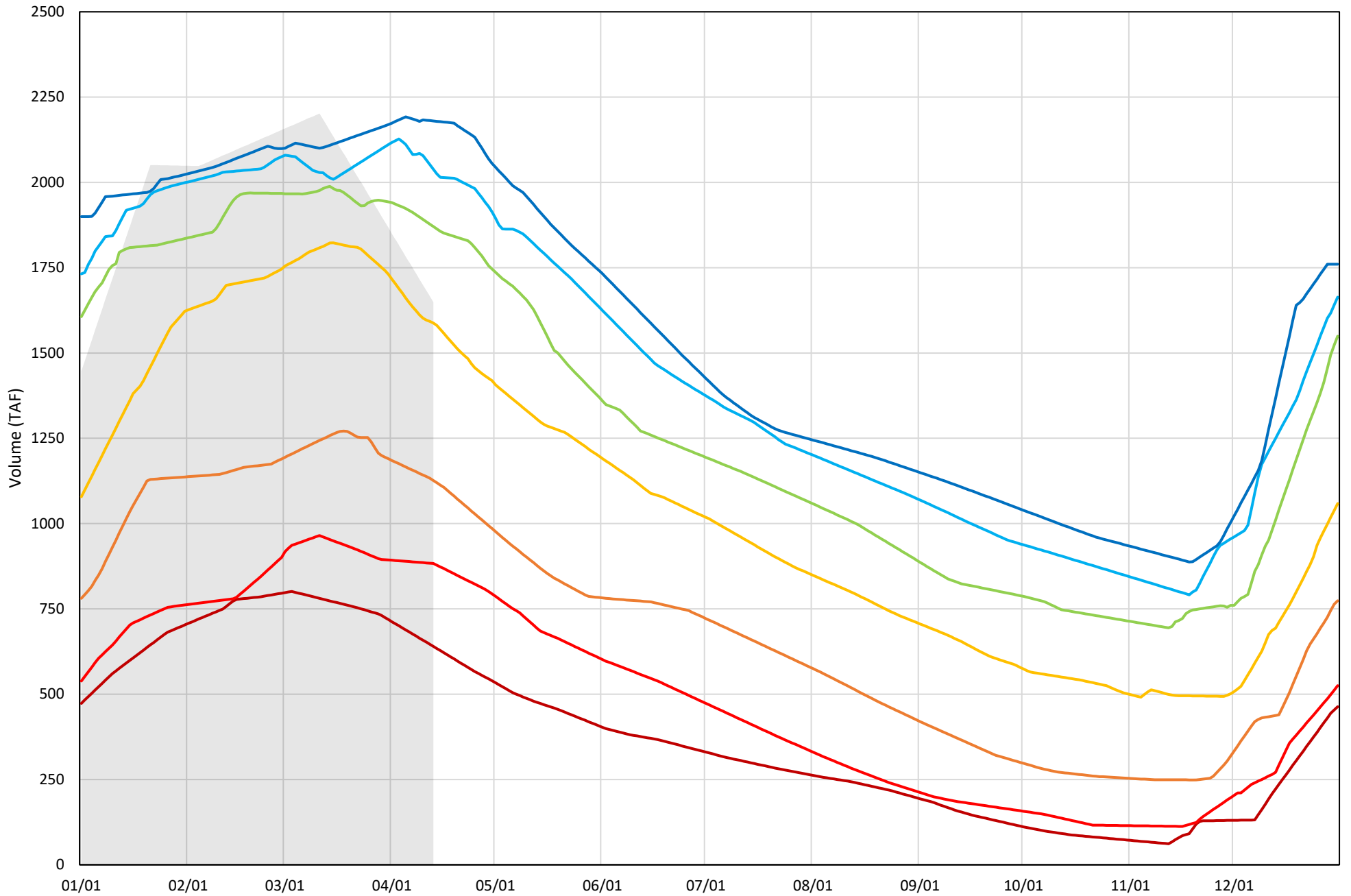
Trinity Lake Cold Water Pool Volume ≤52°F - Percent Exceedances (2000-2025)

2026 95 90 75 50 25 10 5



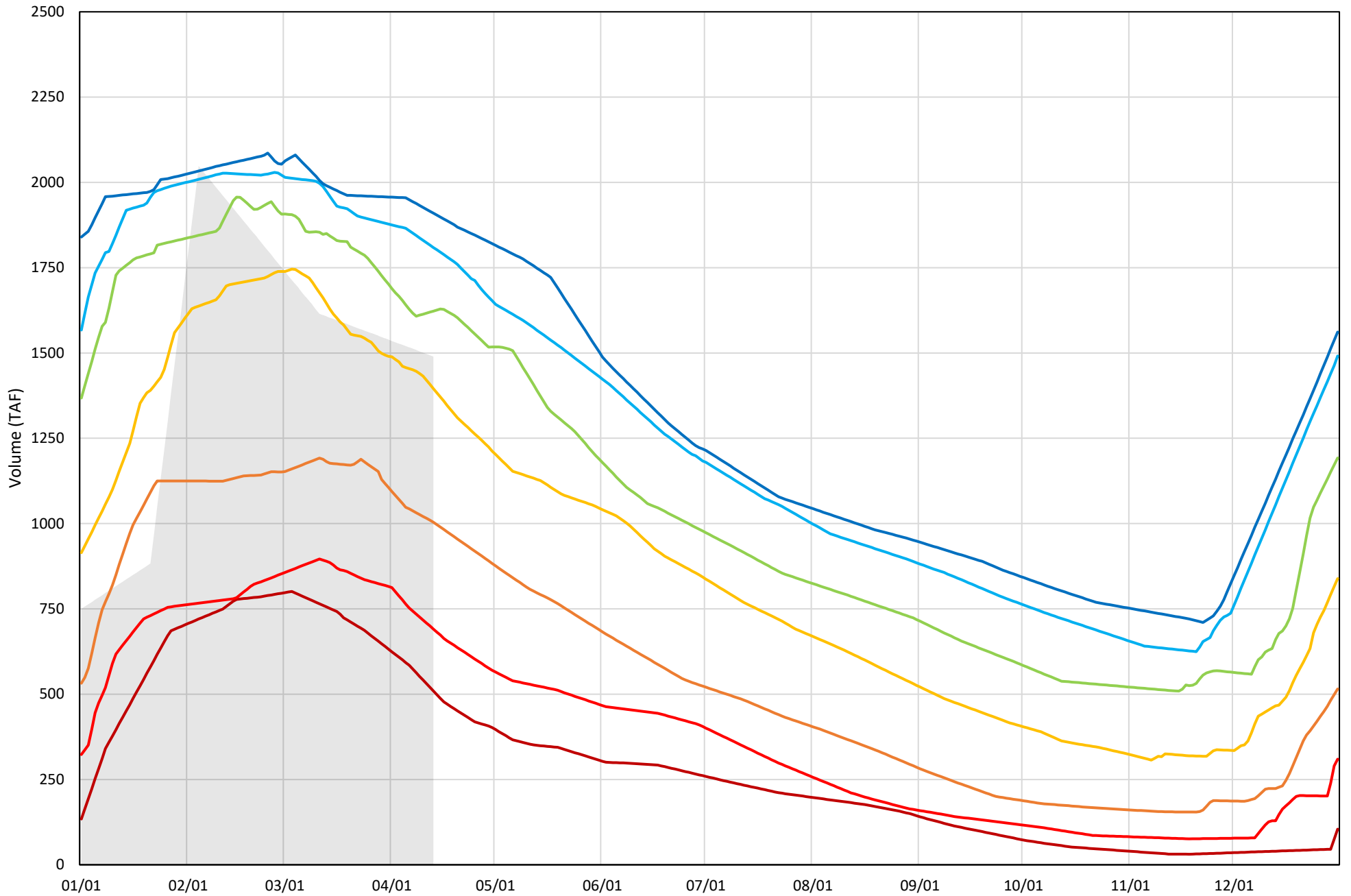
Trinity Lake Cold Water Pool Volume ≤50°F - Percent Exceedances (2000-2025)

2026 95 90 75 50 25 10 5

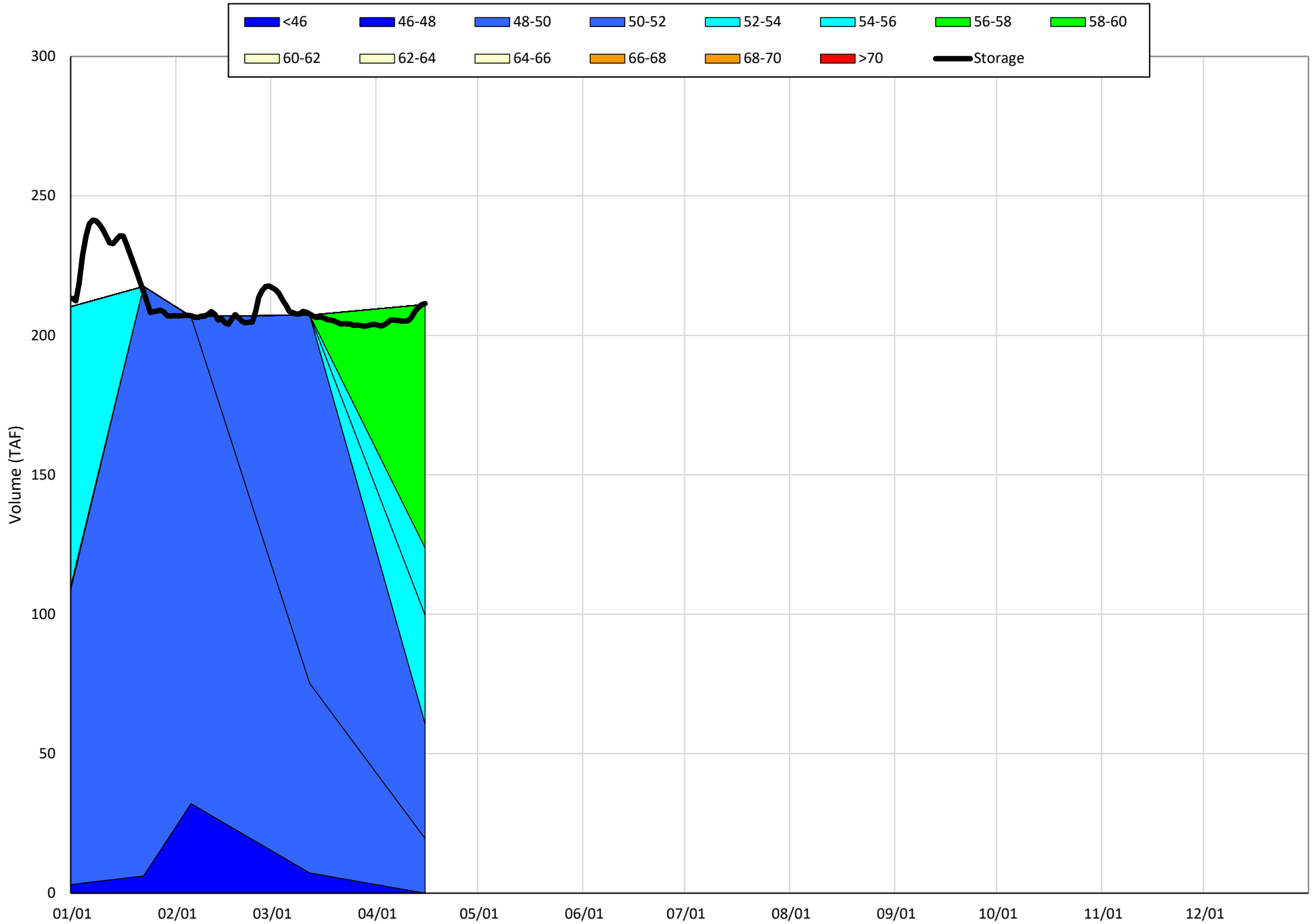


Trinity Lake Cold Water Pool Volume $\leq 48^{\circ}\text{F}$ - Percent Exceedances (2000-2025)

2026 95 90 75 50 25 10 5



Whiskeytown Lake Isothermobaths Plot - 2026



Estimated CVP Operations 90% Exceedance

Storages

Federal End of the Month Storage/Elevation (TAF/Feet)

Facility	Mar	Apr	May	Jun	Jul	Aug	Sep	Oct	Nov	Dec	Jan	Feb	Mar
Trinity	2232	2228	2033	1878	1727	1545	1369	1291	1234	1165	1167	1139	1167
Elevation		2356	2343	2332	2321	2307	2292	2285	2280	2273	2273	2270	2273
Whiskeytown	204	206	238	238	238	238	238	206	206	206	206	206	206
Elevation		1199	1209	1209	1209	1209	1209	1199	1199	1199	1199	1199	1199
Shasta	4090	4090	3814	3420	2892	2409	2205	2054	2071	2130	2247	2435	2707
Elevation		1051	1041	1025	1003	980	969	960	961	965	971	981	994
Folsom	817	965	897	750	509	358	300	292	287	291	305	364	486
Elevation		465	459	444	418	397	387	386	385	386	388	398	415
New Melones	1884	1790	1711	1629	1548	1487	1437	1381	1378	1375	1382	1380	1401
Elevation		1033	1025	1017	1008	1002	996	990	990	989	990	990	992
Federal San Luis	814	796	656	407	167	151	209	297	274	312	505	468	416
Elevation													
Total	10041	10075	9350	8321	7081	6189	5758	5520	5451	5480	5812	5992	6383

State End of the Month Reservoir Storage (TAF/Feet)

Facility	Mar	Apr	May	Jun	Jul	Aug	Sep	Oct	Nov	Dec	Jan	Feb	Mar
Oroville	3090	3113	2827	2588	2135	1782	1513	1431	1304	1231	1287	1427	1641
Elevation		872	852	833	795	761	732	722	707	697	704	722	746
State San Luis	1039	974	845	743	766	812	911	871	942	1043	1043	986	951
Elevation													
Total San Luis (TAF)	1853	1770	1501	1150	932	964	1120	1168	1216	1356	1548	1453	1367
Elevation		522	499	467	446	449	465	469	473	487	503	495	488

Monthly River Releases (TAF/cfs)

Facility	Mar	Apr	May	Jun	Jul	Aug	Sep	Oct	Nov	Dec	Jan	Feb	Mar
Trinity		74	68	47	28	53	52	23	18	78	18	17	28
cfs		1,252	1,114	789	455	857	870	373	300	1,276	300	300	450
Clear Creek		15	18	13	7	6	7	10	12	16	18	17	18
cfs		247	295	215	113	100	120	157	210	260	293	300	286
Sacramento		416	596	654	768	725	446	430	250	200	200	250	277
cfs		7000	9700	11000	12500	11800	7500	7000	4200	3250	3250	4500	4500
American		277	168	204	287	201	95	50	48	49	49	44	50
cfs		4650	2725	3431	4676	3262	1600	807	800	800	800	800	811
Stanislaus		60	24	11	9	9	9	35	12	12	12	16	12
cfs		1012	391	189	150	150	150	577	200	200	200	293	200
Feather		202	166	119	320	264	297	71	74	77	77	58	65
cfs		3400	2700	2000	5200	4300	5000	1150	1250	1250	1250	1050	1050

Trinity Diversions (TAF)

Facility	Mar	Apr	May	Jun	Jul	Aug	Sep	Oct	Nov	Dec	Jan	Feb	Mar
Carr PP		24	159	121	122	122	118	61	51	12	10	65	31
Spring Crk. PP		25	115	110	115	115	110	85	40	0	0	60	33

Delta Summary (TAF)

Facility/Location/Metric	Mar	Apr	May	Jun	Jul	Aug	Sep	Oct	Nov	Dec	Jan	Feb	Mar
Tracy		117	109	49	90	260	213	235	63	72	230	47	53
USBR Banks		0	0	0	9	9	39	0	0	0	0	0	0
Contra Costa		12.0	12.0	10.0	11.0	12.0	12.0	14.0	14.0	14.0	14.0	14.0	12.0
Total USBR		129	121	59	110	281	264	249	77	86	244	61	65
State Export		45	37	37	193	195	229	83	161	186	150	60	141
Total Export		175	158	96	303	476	493	332	238	272	394	121	206
COA Balance		24	-76	-76	-76	-76	-76	-77	-76	-77	-77	-76	-76
Vernalis TAF		117	84	42	42	37	43	94	74	75	75	86	98
Vernalis cfs		1970	1368	710	687	605	722	1537	1242	1225	1225	1554	1599
Old/Middle R. calc. cfs		-1,963	-1,956	-1,513	-4,076	-6,280	-6,646	-4,057	-3,112	-3,446	-4,974	-1,569	-2,451
Computed DOI cfs		19348	8980	7094	7727	5108	5009	4994	5043	4994	6735	11400	11403
Excess Outflow		7951	0	0	0	0	0	0	0	0	1741	0	0
% Export/Inflow		12%	17%	12%	28%	45%	51%	44%	38%	42%	50%	15%	22%
% Export/Inflow std.		35%	35%	35%	65%	65%	65%	65%	65%	65%	65%	45%	35%

Hydrology

	Trinity	Shasta	Folsom	New Melones
Water Year Inflow (TAF)	1024	4,650	2,276	691.644152
Year to Date + Forecasted	85%	84%	84%	65%
% of mean				

CVP actual operations do not follow any forecasted operation or outlook; actual operations are based on real-time conditions.

CVP operational forecasts or outlooks represent general system-wide dynamics and do not necessarily address specific watershed/tributary details.

CVP releases or export values represent monthly averages.

CVP Operations are updated monthly as new hydrology information is made available December through May.

Estimated CVP Operations 50% Exceedance

Storages

Federal End of the Month Storage/Elevation (TAF/Feet)

Facility	Mar	Apr	May	Jun	Jul	Aug	Sep	Oct	Nov	Dec	Jan	Feb	Mar
Trinity	2232	2249	2140	2018	1903	1754	1618	1560	1527	1505	1465	1510	1639
Elevation		2358	2350	2342	2334	2323	2313	2308	2305	2304	2300	2304	2314
Whiskeytown	204	206	238	238	238	238	238	206	206	206	206	206	206
Elevation		1199	1209	1209	1209	1209	1209	1199	1199	1199	1199	1199	1199
Shasta	4090	4090	3928	3493	2919	2453	2258	2133	2226	2562	2966	3541	3936
Elevation		1051	1045	1028	1004	982	972	965	970	987	1006	1030	1045
Folsom	817	959	940	774	443	342	277	294	328	380	471	564	753
Elevation		464	463	447	409	394	383	386	392	400	413	424	445
New Melones	1884	1804	1756	1684	1606	1547	1500	1453	1465	1483	1519	1565	1645
Elevation		1034	1029	1022	1014	1008	1003	998	999	1001	1005	1010	1018
Federal San Luis	814	756	595	455	280	197	201	305	340	537	719	828	938
Elevation													
Total	10041	10064	9596	8662	7390	6531	6093	5951	6092	6673	7346	8213	9117

State End of the Month Reservoir Storage (TAF/Feet)

Facility	Mar	Apr	May	Jun	Jul	Aug	Sep	Oct	Nov	Dec	Jan	Feb	Mar
Oroville	3090	3122	2976	2783	2294	1857	1522	1366	1329	1376	1594	1984	2368
Elevation		873	862	848	809	769	733	714	710	716	741	781	815
State San Luis	1039	933	702	523	524	611	708	784	861	1017	1028	1042	991
Elevation													
Total San Luis (TAF)	1853	1689	1297	979	803	807	909	1089	1201	1554	1746	1870	1929
Elevation		515	481	451	432	433	444	462	472	504	520	530	535

Monthly River Releases (TAF/cfs)

Facility	Mar	Apr	May	Jun	Jul	Aug	Sep	Oct	Nov	Dec	Jan	Feb	Mar
Trinity		74	68	47	28	53	52	23	18	78	123	83	18
cfs		1,252	1,114	789	455	857	870	373	300	1,276	2,000	1,500	300
Clear Creek		15	18	13	7	6	7	10	12	16	18	17	18
cfs		247	295	215	113	100	120	157	210	260	293	300	286
Sacramento		416	523	714	830	707	422	430	244	200	200	180	430
cfs		7000	8507	12000	13500	11500	7100	7000	4100	3250	3250	3250	7000
American		283	184	246	393	171	121	64	59	61	61	139	123
cfs		4750	3000	4142	6396	2788	2042	1039	1000	1000	1000	2500	2000
Stanislaus		60	24	9	9	9	9	35	12	12	12	11	12
cfs		1012	384	150	150	150	150	577	200	200	200	200	200
Feather		202	98	77	400	400	387	184	74	77	65	58	65
cfs		3400	1600	1300	6500	6500	6500	3000	1250	1250	1050	1050	1050

Trinity Diversions (TAF)

Facility	Mar	Apr	May	Jun	Jul	Aug	Sep	Oct	Nov	Dec	Jan	Feb	Mar
Carr PP		18	111	87	96	96	87	45	46	0	0	0	0
Spring Crk. PP		25	75	80	90	90	80	70	40	0	17	28	20

Delta Summary (TAF)

Facility/Location/Metric	Mar	Apr	May	Jun	Jul	Aug	Sep	Oct	Nov	Dec	Jan	Feb	Mar
Tracy		124	157	255	263	263	212	285	134	250	235	220	245
USBR Banks		0	0	0	22	22	52	0	0	0	0	0	0
Contra Costa		12.7	12.7	9.8	11.1	12.7	14.0	14.0	16.0	18.0	14.0	14.0	12.7
Total USBR		136	170	265	296	298	278	299	150	268	249	234	258
State Export		60	49	52	254	314	313	253	227	250	155	145	160
Total Export		196	219	317	550	612	591	552	377	518	404	379	418
COA Balance		24	24	24	25	25	25	25	25	25	25	25	25
Vernalis TAF		149	116	56	48	46	51	104	83	83	91	110	120
Vernalis cfs		2512	1884	940	784	752	856	1699	1393	1355	1485	1983	1957
Old/Middle R. calc. cfs		-1,996	-2,485	-4,267	-7,127	-7,914	-7,854	-6,740	-4,843	-6,469	-4,982	-4,954	-4,941
Computed DOI cfs		21651	9158	7094	9451	5108	5009	4994	5043	6832	13665	19937	22904
Excess Outflow		10254	1920	0	0	0	0	0	0	1838	6995	8537	11501
% Export/Inflow		12%	23%	33%	39%	51%	54%	55%	49%	53%	33%	25%	22%
% Export/Inflow std.		35%	35%	35%	65%	65%	65%	65%	65%	65%	65%	45%	35%

Hydrology

Water Year Inflow (TAF)	Trinity	Shasta	Folsom	New Melones
Year to Date + Forecasted	1104	4,860	2,421	752
% of mean	91%	88%	89%	71%

CVP actual operations do not follow any forecasted operation or outlook; actual operations are based on real-time conditions.

CVP operational forecasts or outlooks represent general system-wide dynamics and do not necessarily address specific watershed/tributary details.

CVP releases or export values represent monthly averages.

CVP Operations are updated monthly as new hydrology information is made available December through May.

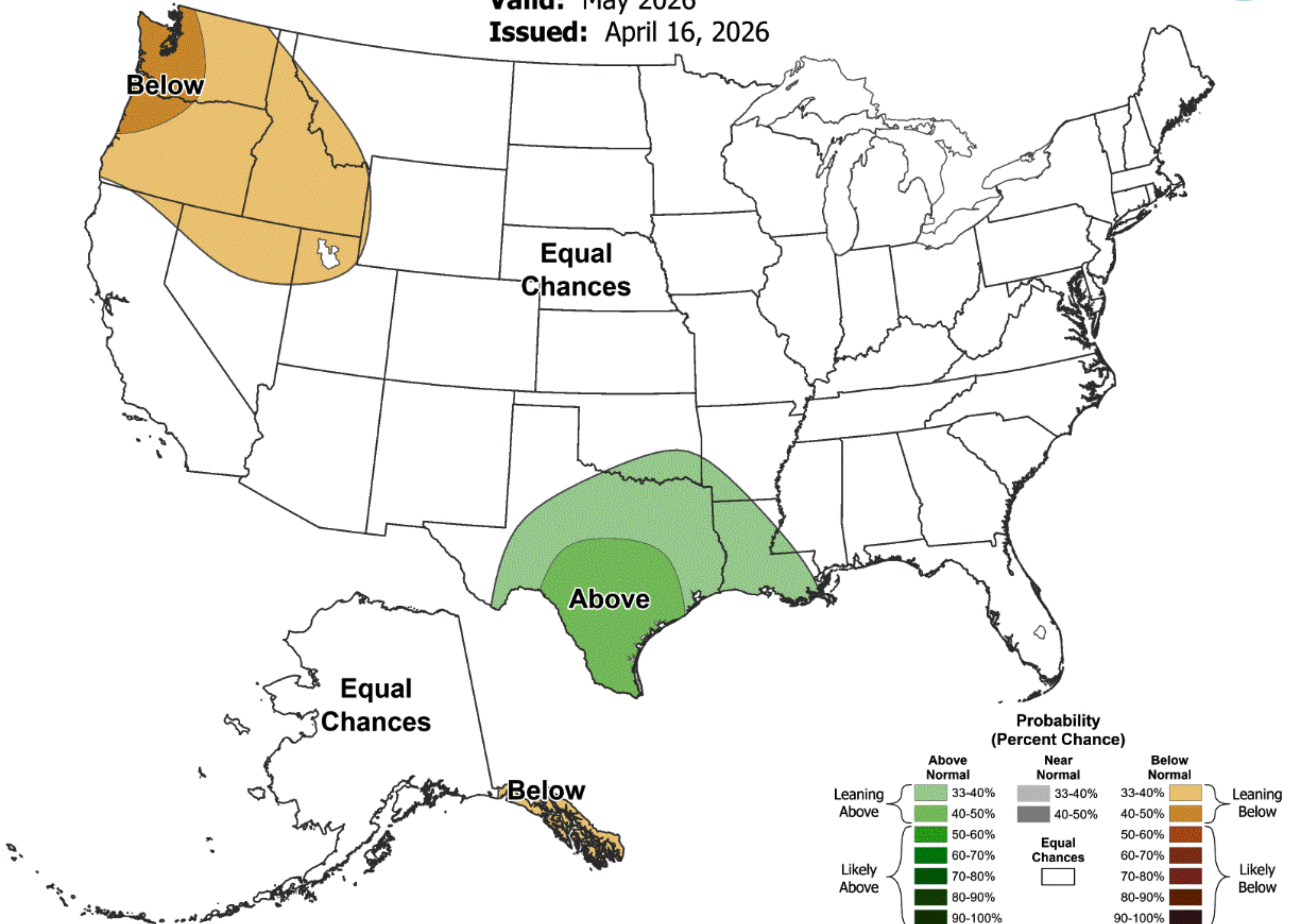


Monthly Precipitation Outlook



Valid: May 2026

Issued: April 16, 2026



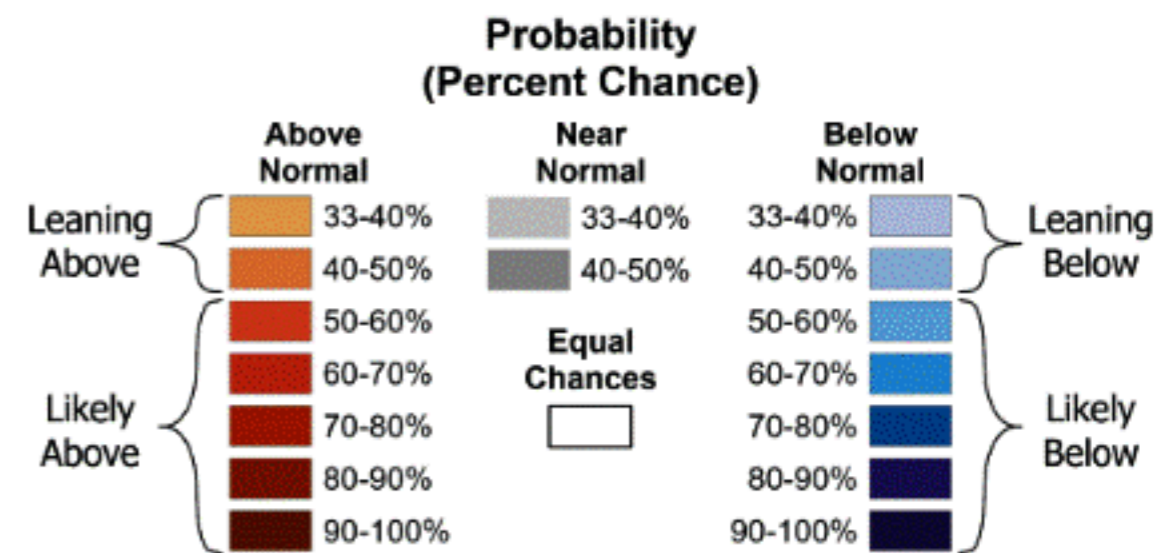
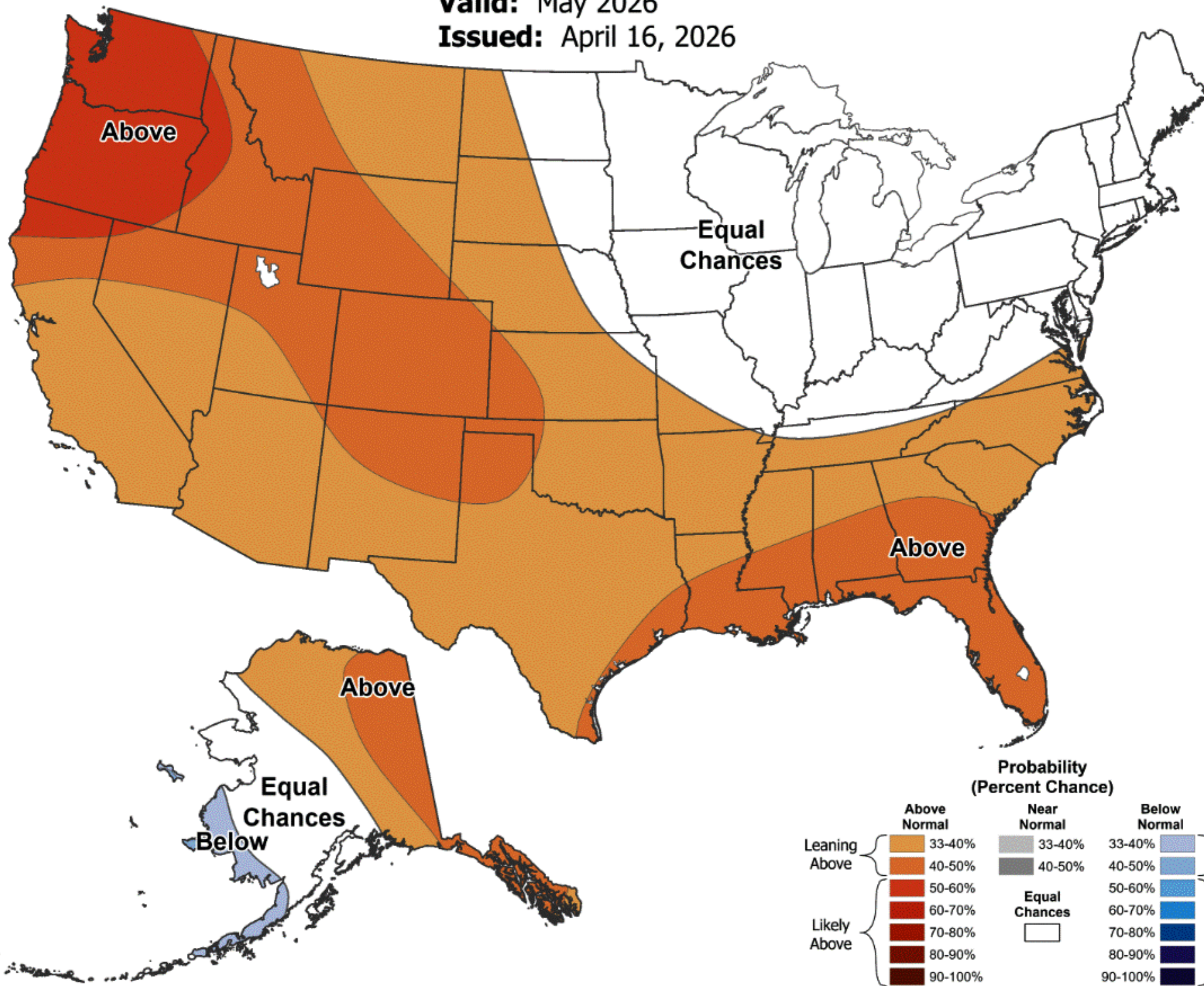


Monthly Temperature Outlook



Valid: May 2026

Issued: April 16, 2026



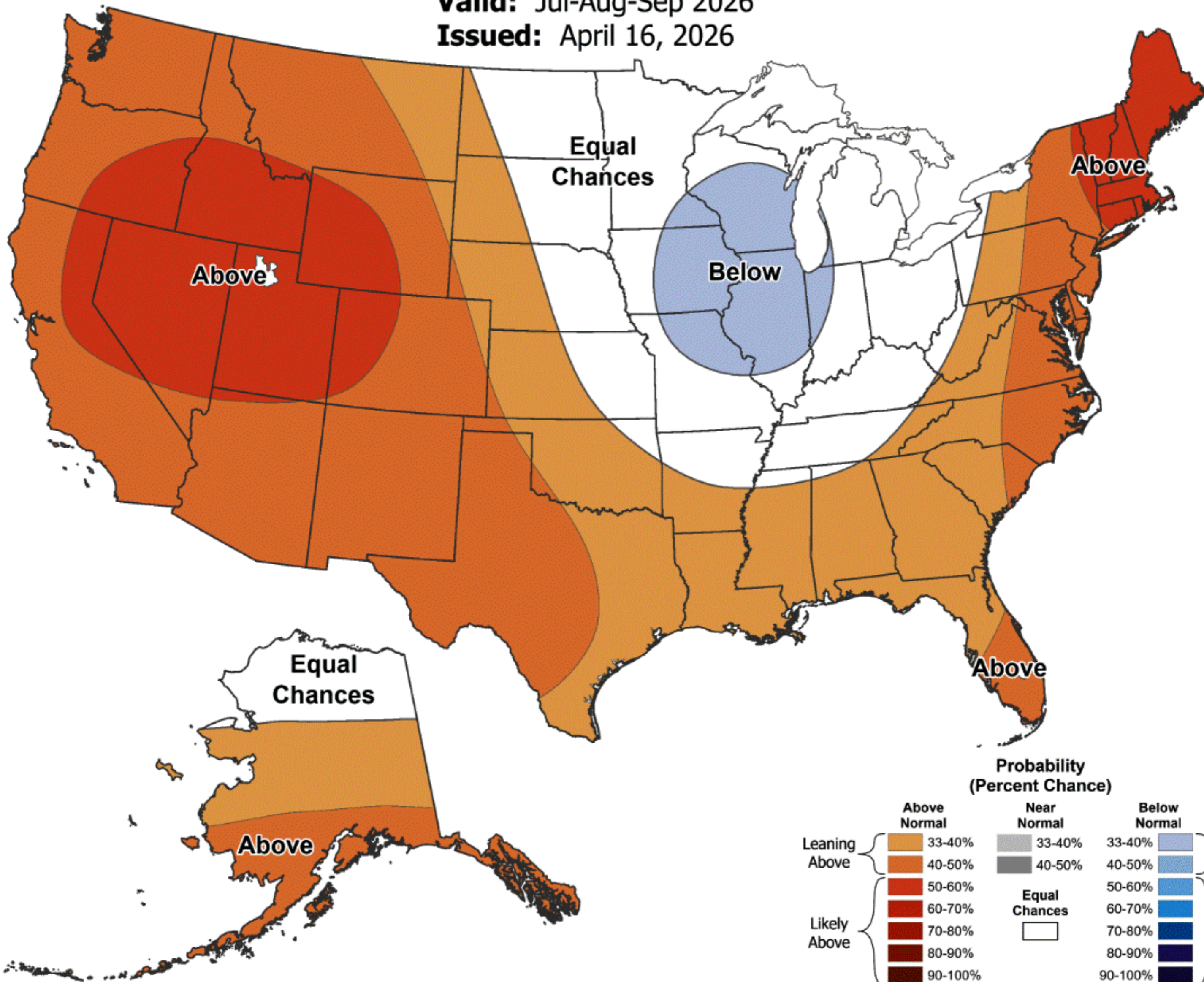


Seasonal Temperature Outlook



Valid: Jul-Aug-Sep 2026

Issued: April 16, 2026



Probability (Percent Chance)

Above Normal		Near Normal		Below Normal	
Leaning Above	33-40%	33-40%	33-40%	Leaning Below	33-40%
	40-50%	40-50%	40-50%		40-50%
Likely Above	50-60%	Equal Chances	Equal Chances	Likely Below	50-60%
	60-70%				60-70%
	70-80%				70-80%
	80-90%				80-90%
	90-100%				90-100%